

R.M. OF HANOVER

· BY-LAW NO. 2274

BEING a By-law of the R.M. of Hanover for the purpose of controlling traffic within the boundaries of the Municipality of Hanover.

WHEREAS, under the provision of “The Highway Traffic Act” a municipal corporation is empowered to exercise control over traffic on its streets, highways, and lanes;

WHEREAS the Council of the Rural Municipality of Hanover deems it expedient and in the best interest of public safety to exercise such control;

AND WHEREAS Section 232 of the Municipal Act S.M. 1996 c.58 M225;

NOW THEREFORE, the Council of the R.M. of Hanover, in meeting duly assembled, enacts as follows:

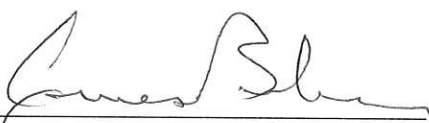
1. That “The Highway Traffic Act” S.M. 1985-86, c.3 Chap. H60 of the Province of Manitoba be and is hereby adopted as the legislation of the Rural Municipality of Hanover.
2. That traffic control devices, as set out in the schedules attached to this By-Law and marked “A” to By-law no. 2274 be and is hereby authorized for erection and wherever said traffic control devices are erected in conformity to this Section, any violation thereof shall constitute a violation of this By-law.
3. That for the purpose of this By-law, traffic control devices shall be defined as being “Stop signs”, “Dead End (checkerboard), and “No Parking signs or parking of any type”

4. That any person guilty of a breach of any of the provision of this By-law shall be liable upon conviction before any "Justice of the Peace" or "Magistrate" to a fine as is prescribed under the Highway Traffic Act.
5. That the Municipality of Hanover has the right to ticket and/or tow a vehicle when there is a concern with emergency vehicle access or public safety.
6. That By-law no. 2213 be hereby repealed.

DONE AND PASSED in Council duly assembled at the R.M. of Hanover, in Manitoba
this 25th day of April A.D. 2012.



Reeve



Chief Administrative Officer

Read a first time this 28th day of March , A.D. 2012.
Read a second time this 25th day of April , A.D. 2012.
Read a third time this 25th day of April , A.D. 2012.

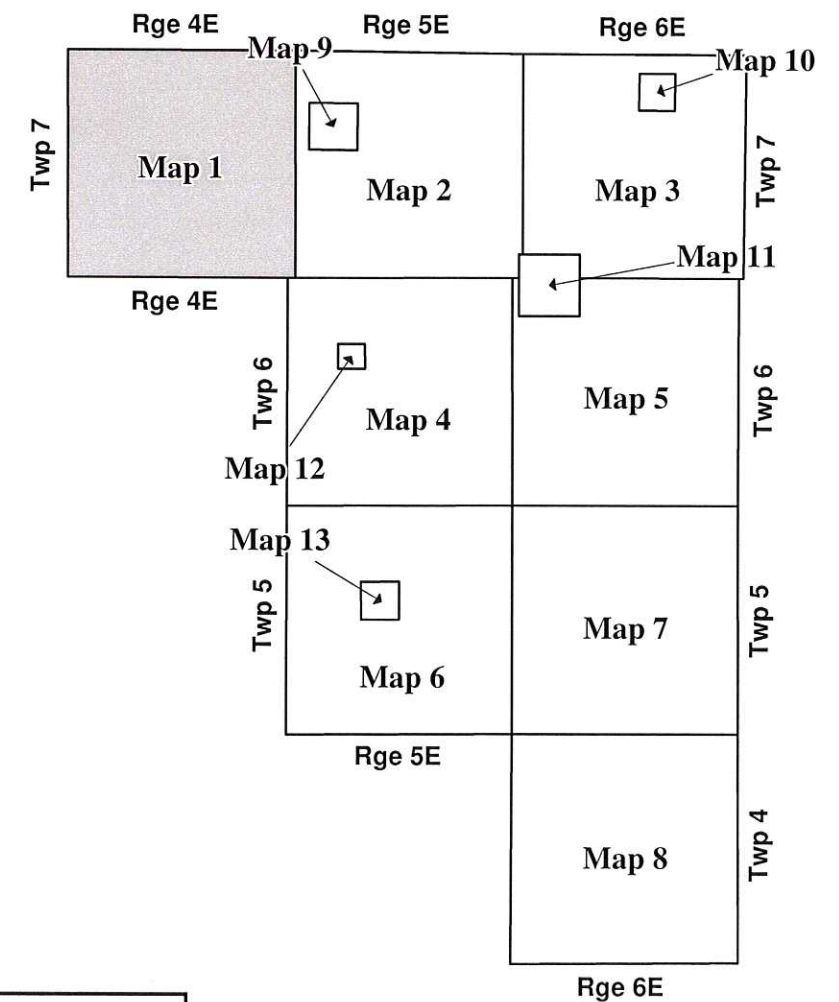
RM of Taché

RM of HANOVER
BY-LAW 2274

Map 1 - Township 7-4E

Legend

• Stop



RM of Ritchot



Date: January, 2010
Revised To: March, 2012

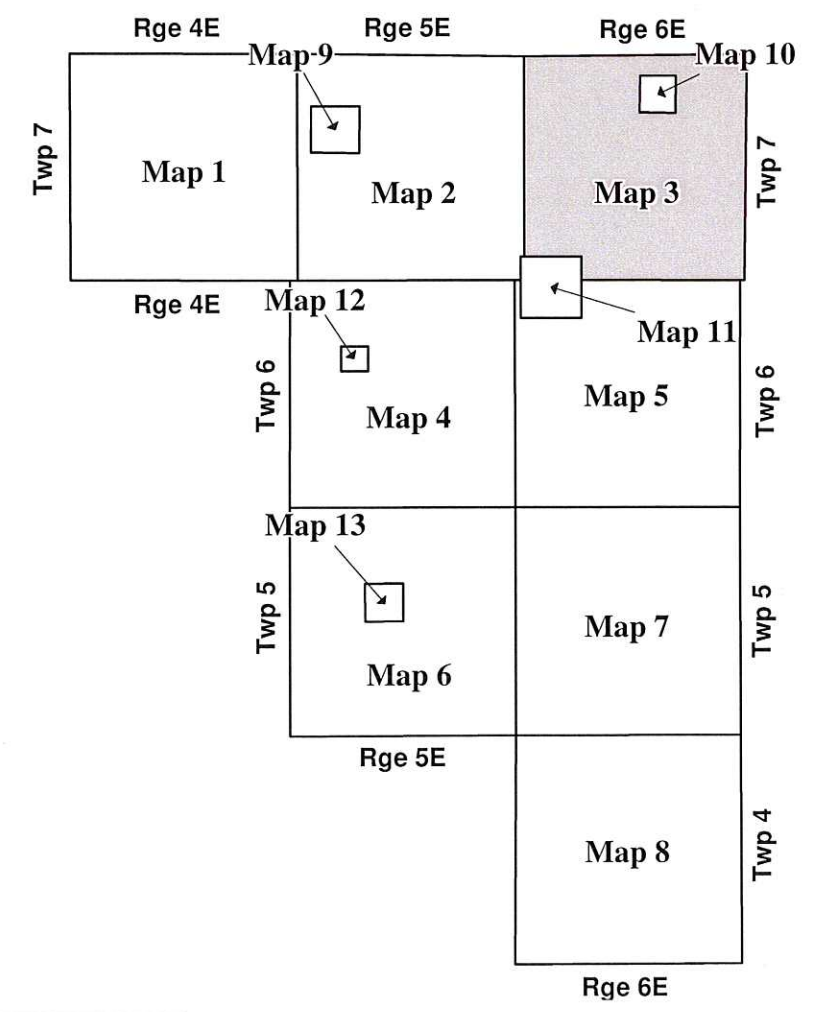
RM of Taché



**RM of HANOVER
BY-LAW 2274**

Map 3 - Township 7-6E

Legend
• Stop

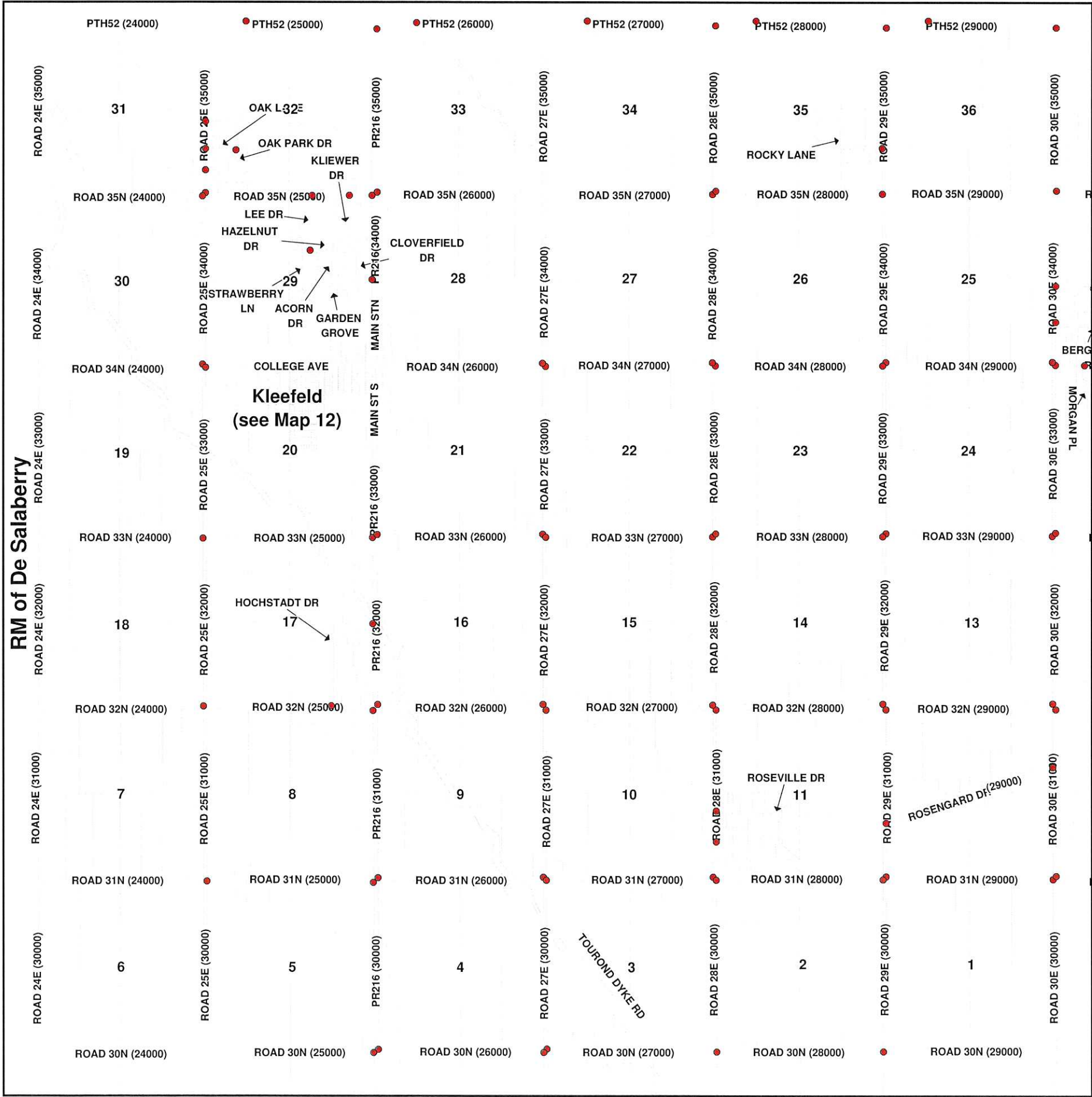


RM of Ste Anne

**City of
Steinbach**

Date: January, 2010
Revised To: March, 2012

RM of De Salaberry

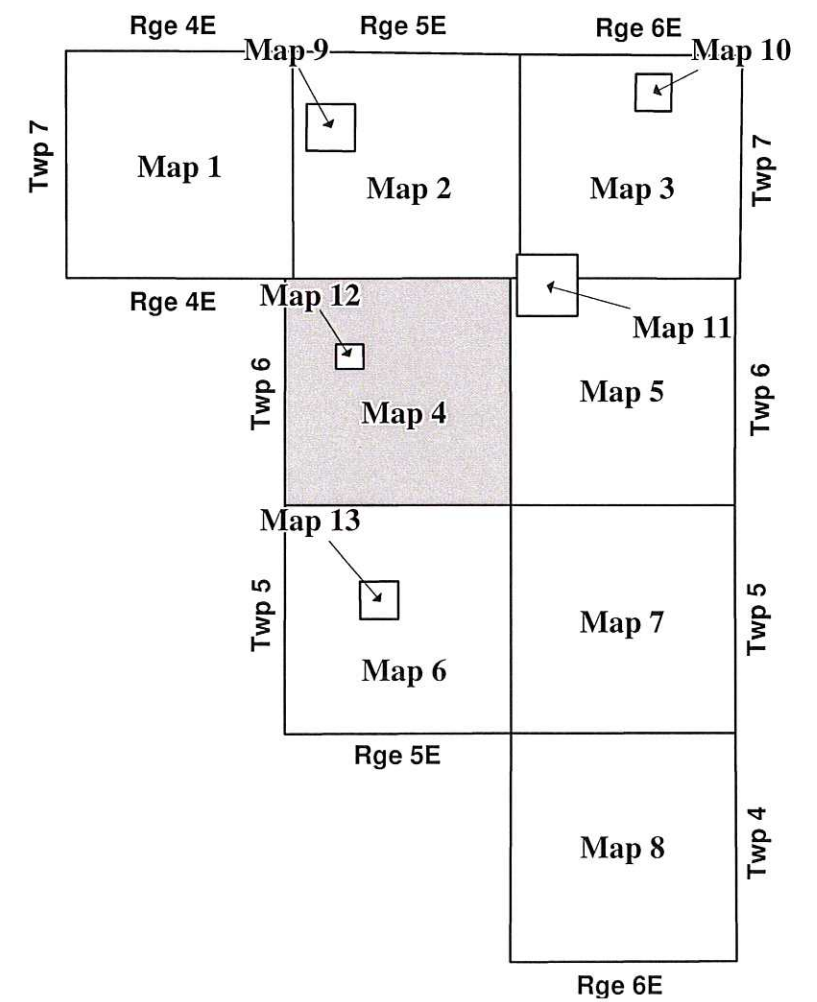


RM of HANOVER BY-LAW 2274

Map 4 - Township 6-5E

Legend

• Stop



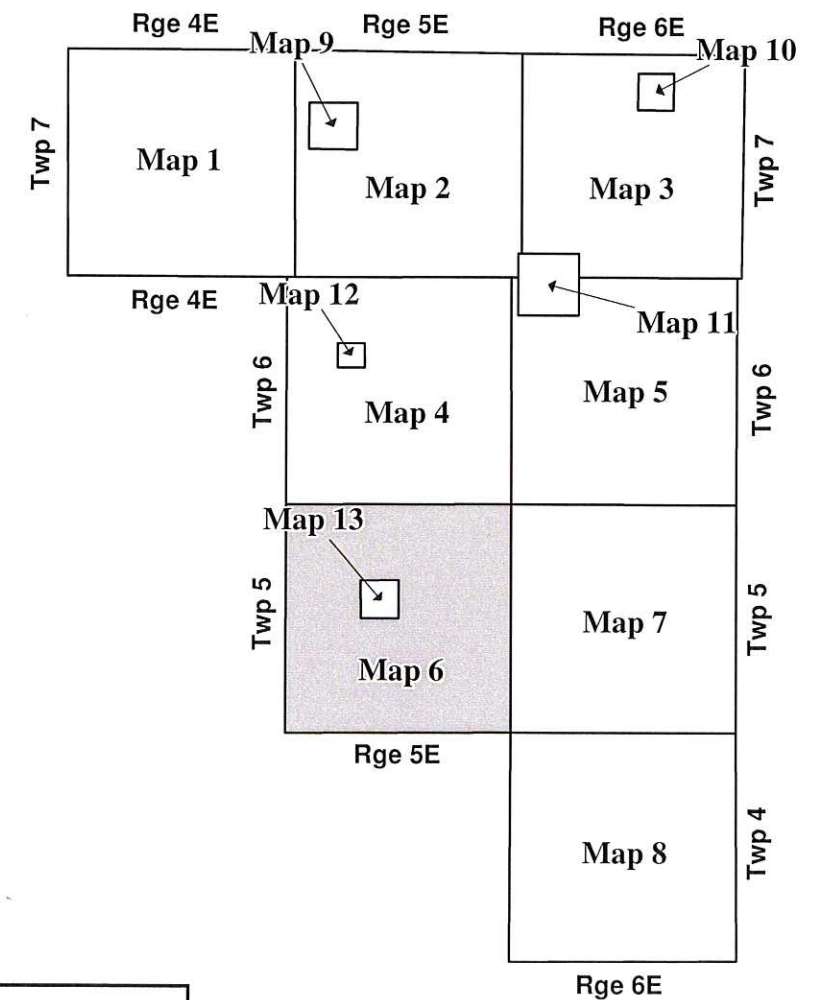
Date: January, 2010
Revised To: March, 2012

RM of HANOVER BY-LAW 2274

Map 6 - Township 5-5E

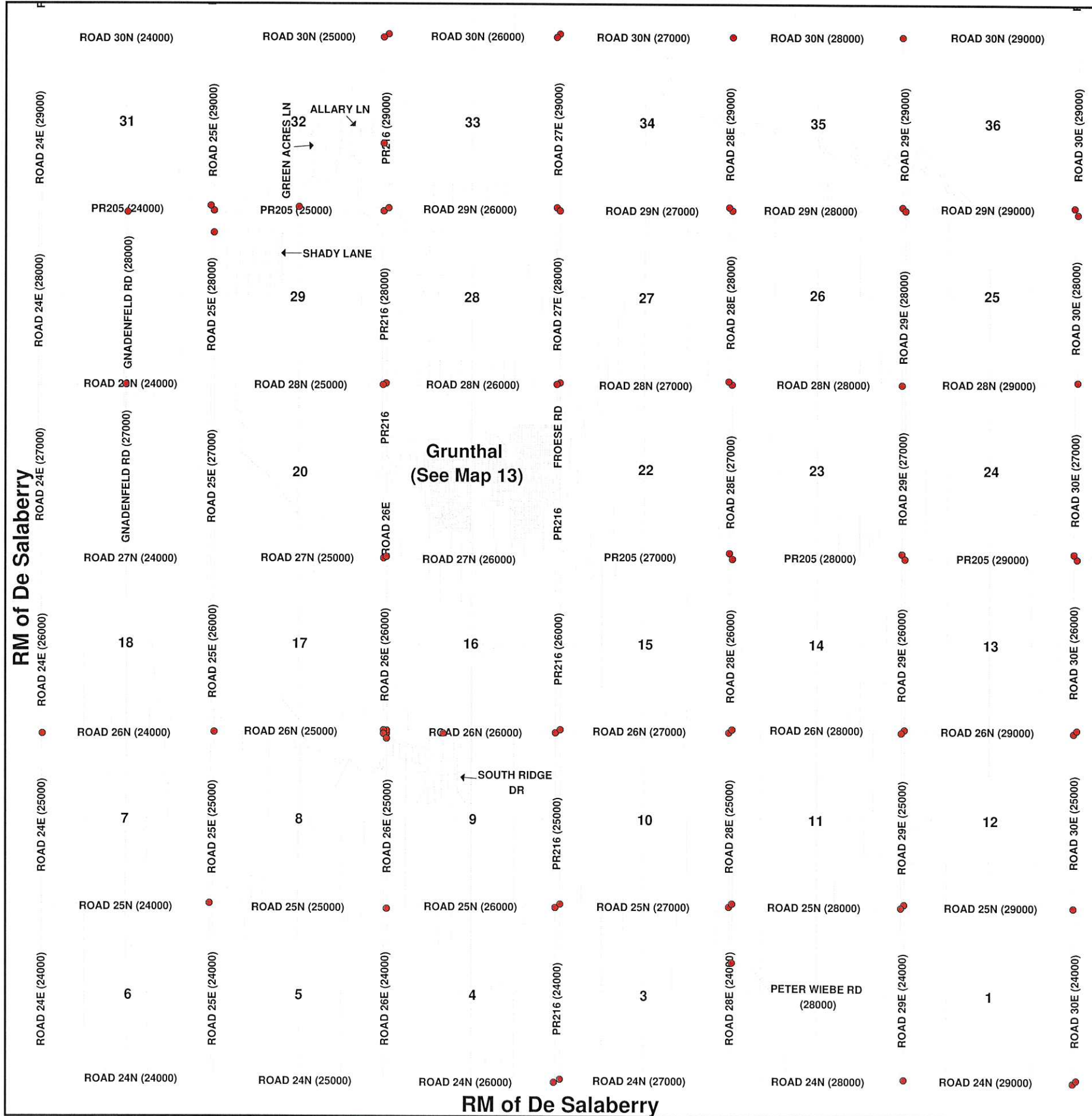
Legend

- Stop
- Yield



Date: January, 2010
Revised To: March, 2012

RM of De Salaberry



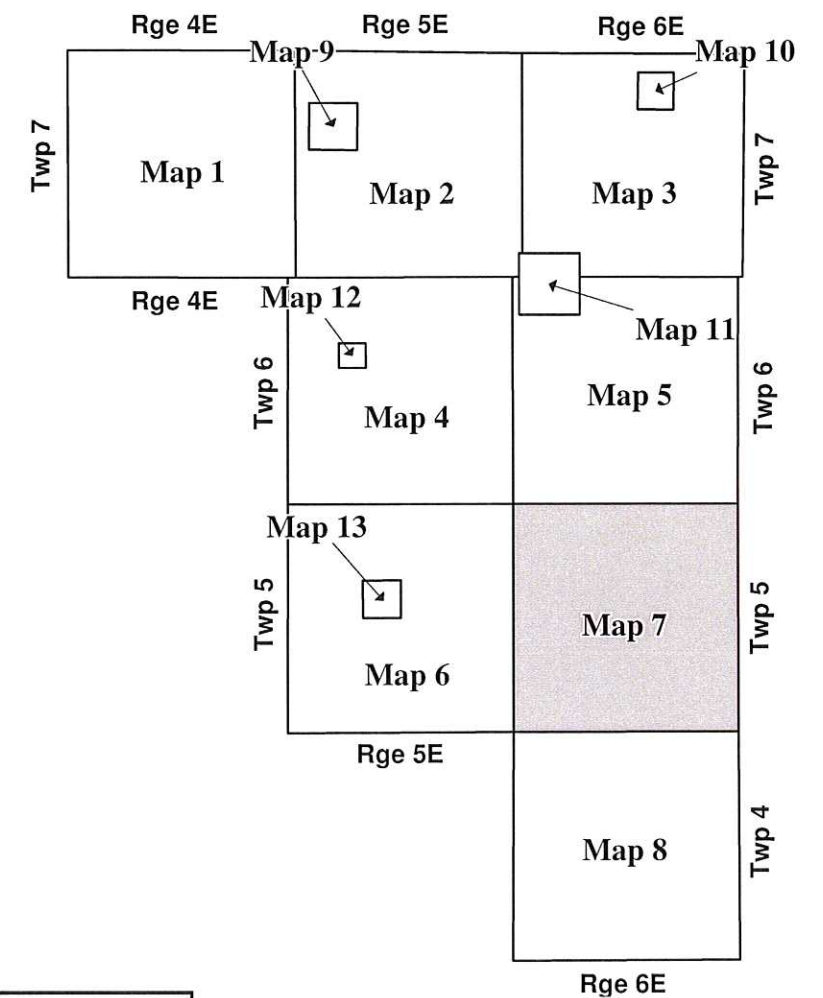
RM of De Salaberry

RM of HANOVER BY-LAW 2274

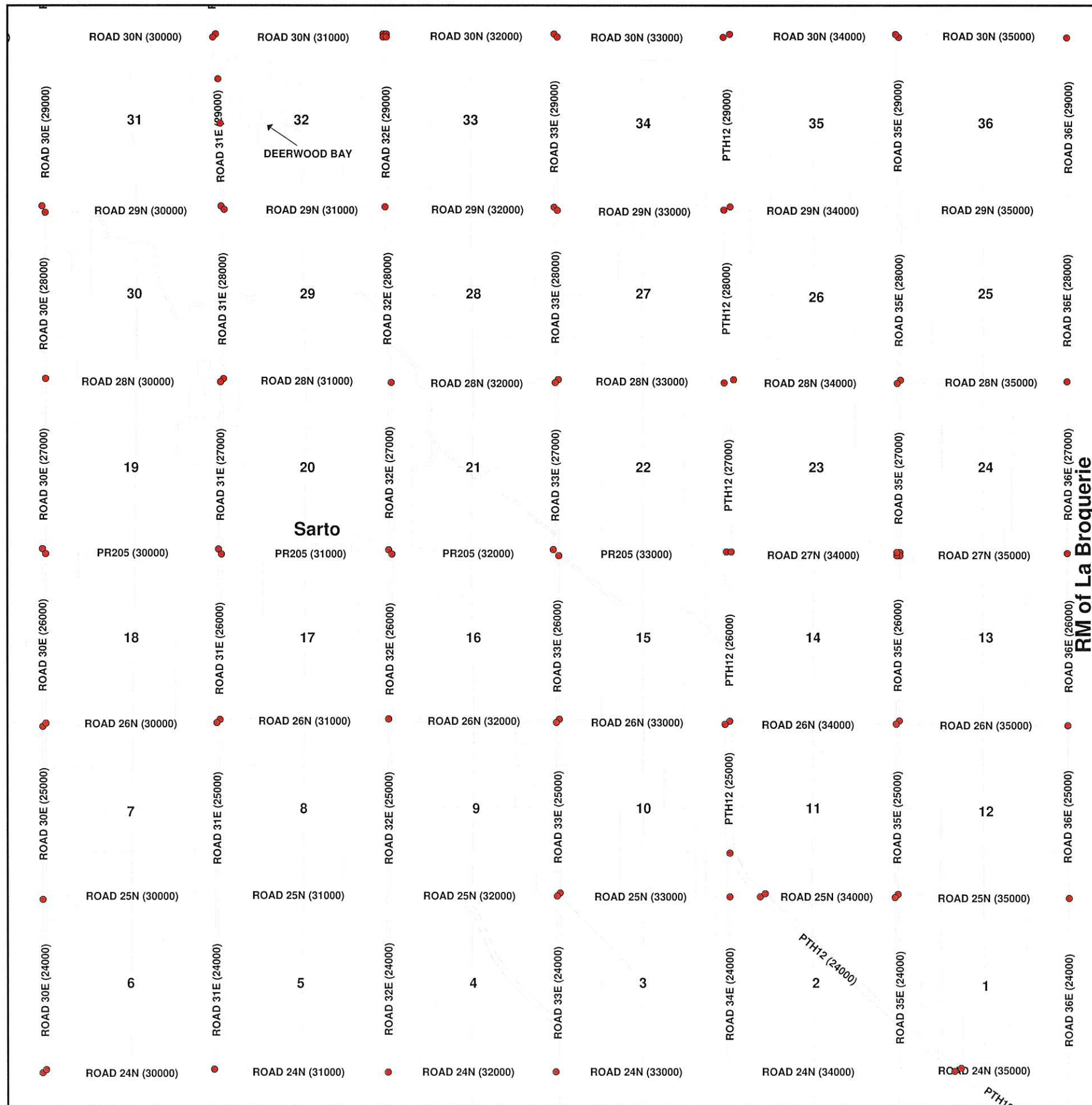
Map 7 - Township 5-6E

Legend

• Stop



Date: January, 2010
Revised To: March, 2012



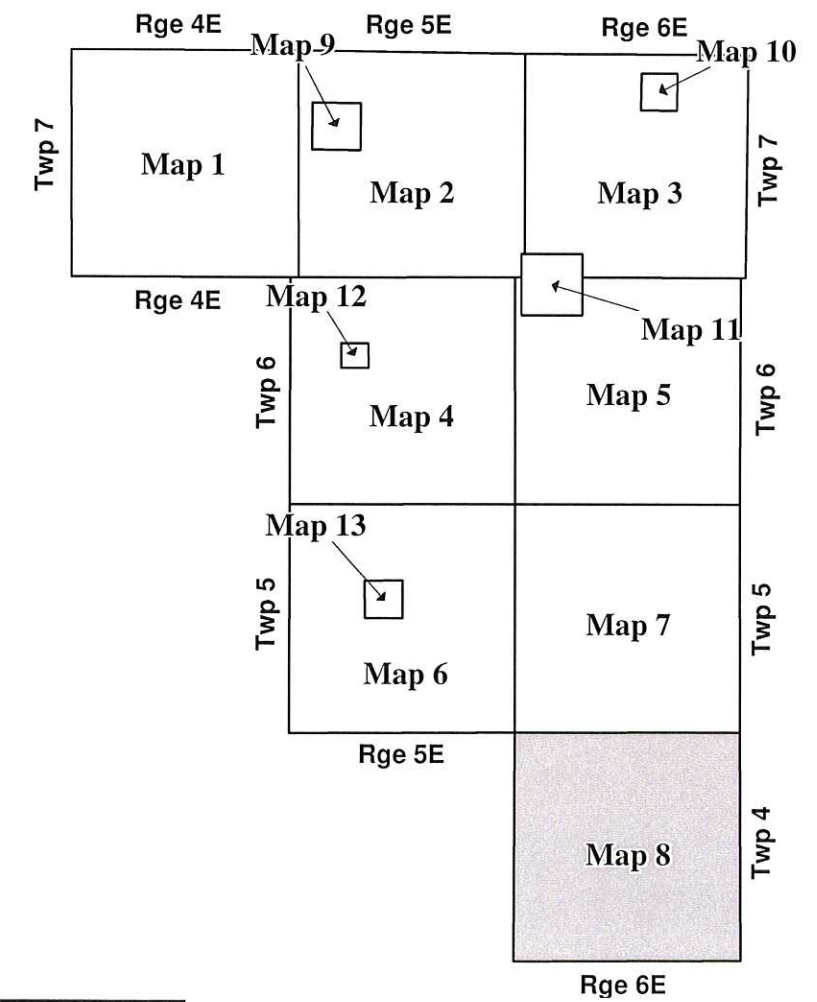
RM of De Salaberry



RM of HANOVER BY-LAW 2274

Map 8 - Township 4-6E

Legend
• Stop

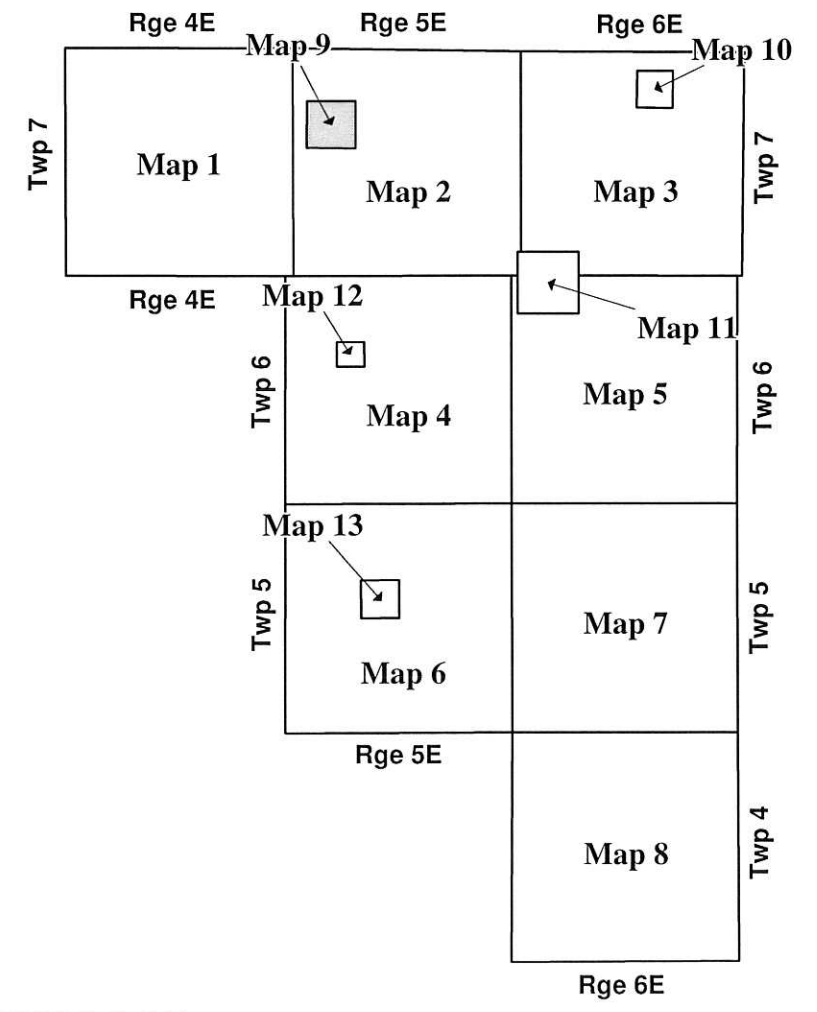


Date: January, 2010
Revised To: March, 2012

RM of HANOVER BY-LAW 2274

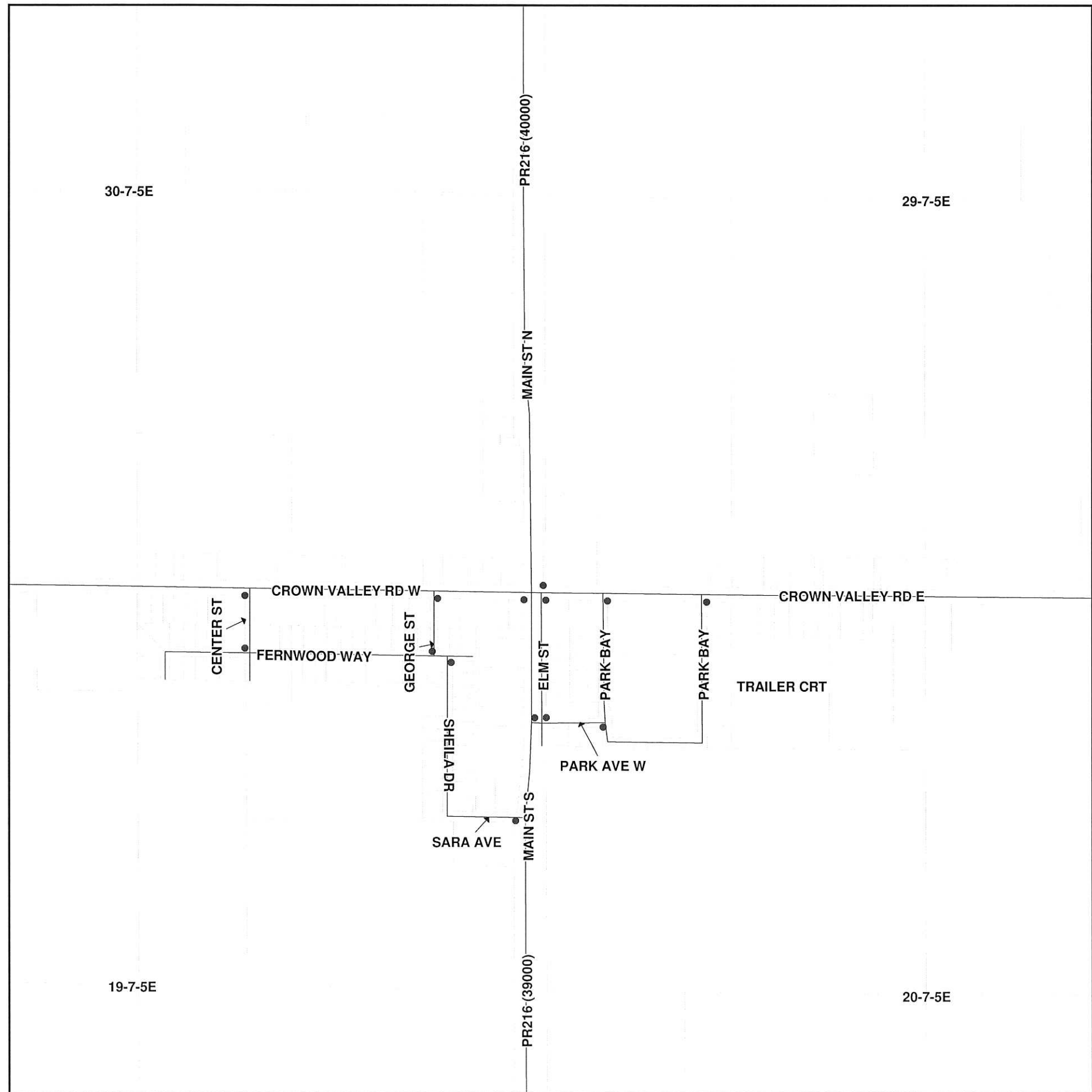
Map 9 - New Bothwell

Legend
• Stop



Date: January, 2010
Revised To: March, 2012

Schedule "A" to By-Law No. 2274



30-7-5E

29-7-5E

19-7-5E

20-7-5E

PR216 (40000)

MAIN ST N

MAIN ST S

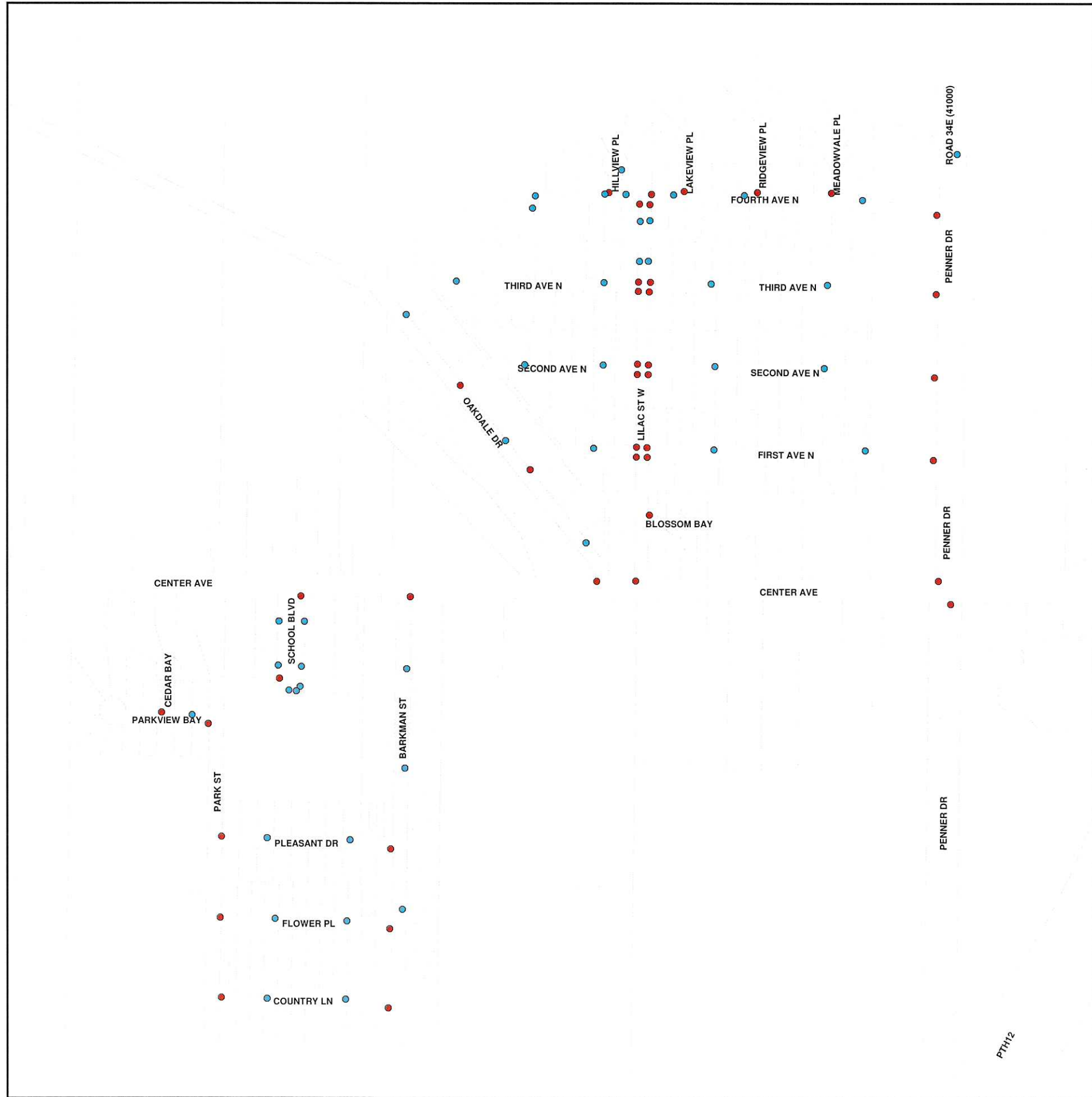
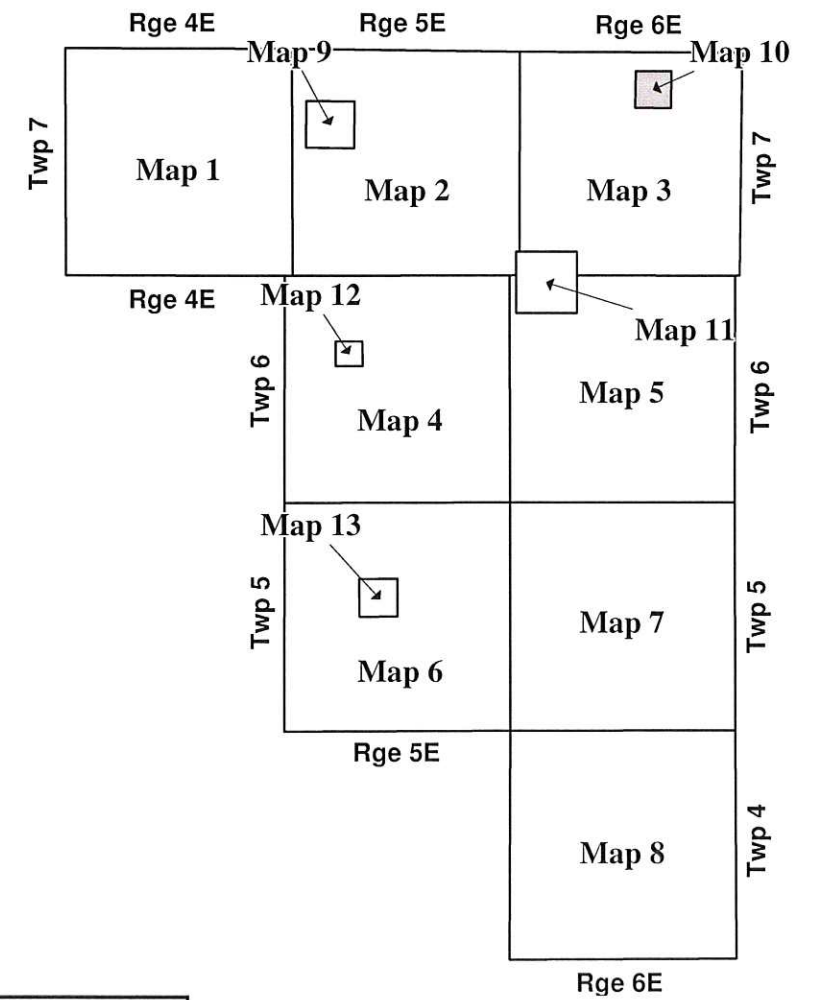
PR216 (39000)

RM of HANOVER BY-LAW 2274

Map 10 - Blumenort

Legend

- No Parking
- Stop



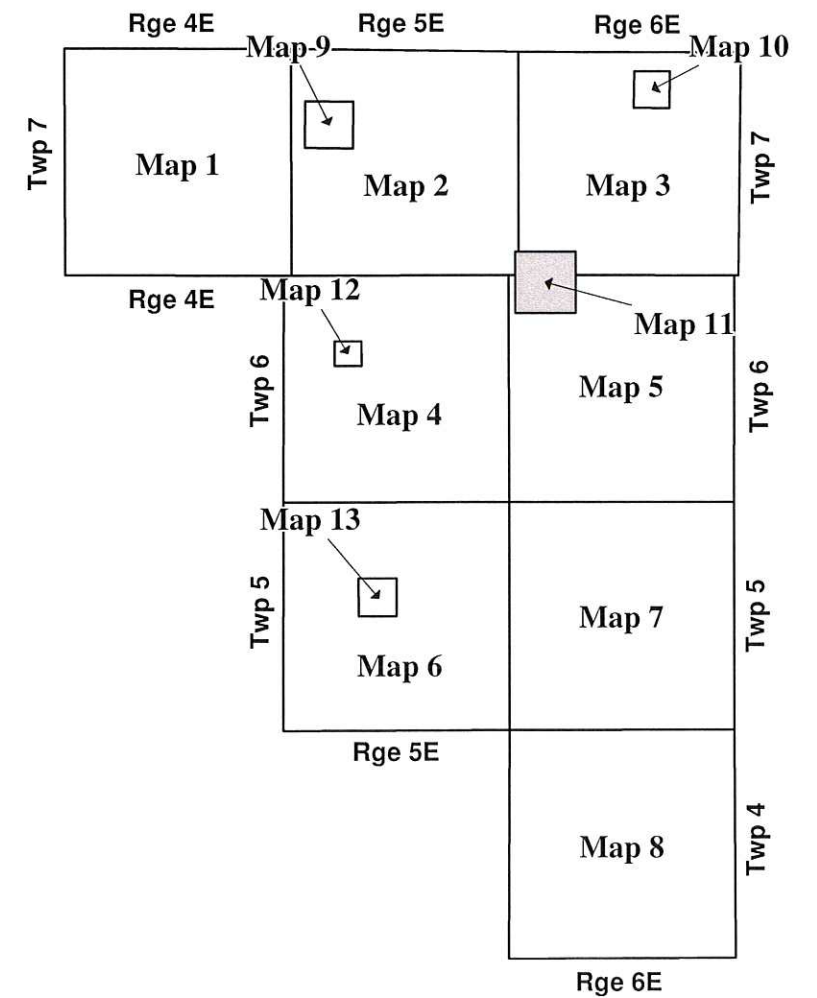
Date: January, 2010
Revised To: March, 2012

RM of HANOVER BY-LAW 2274

Map 11 - Mitchell

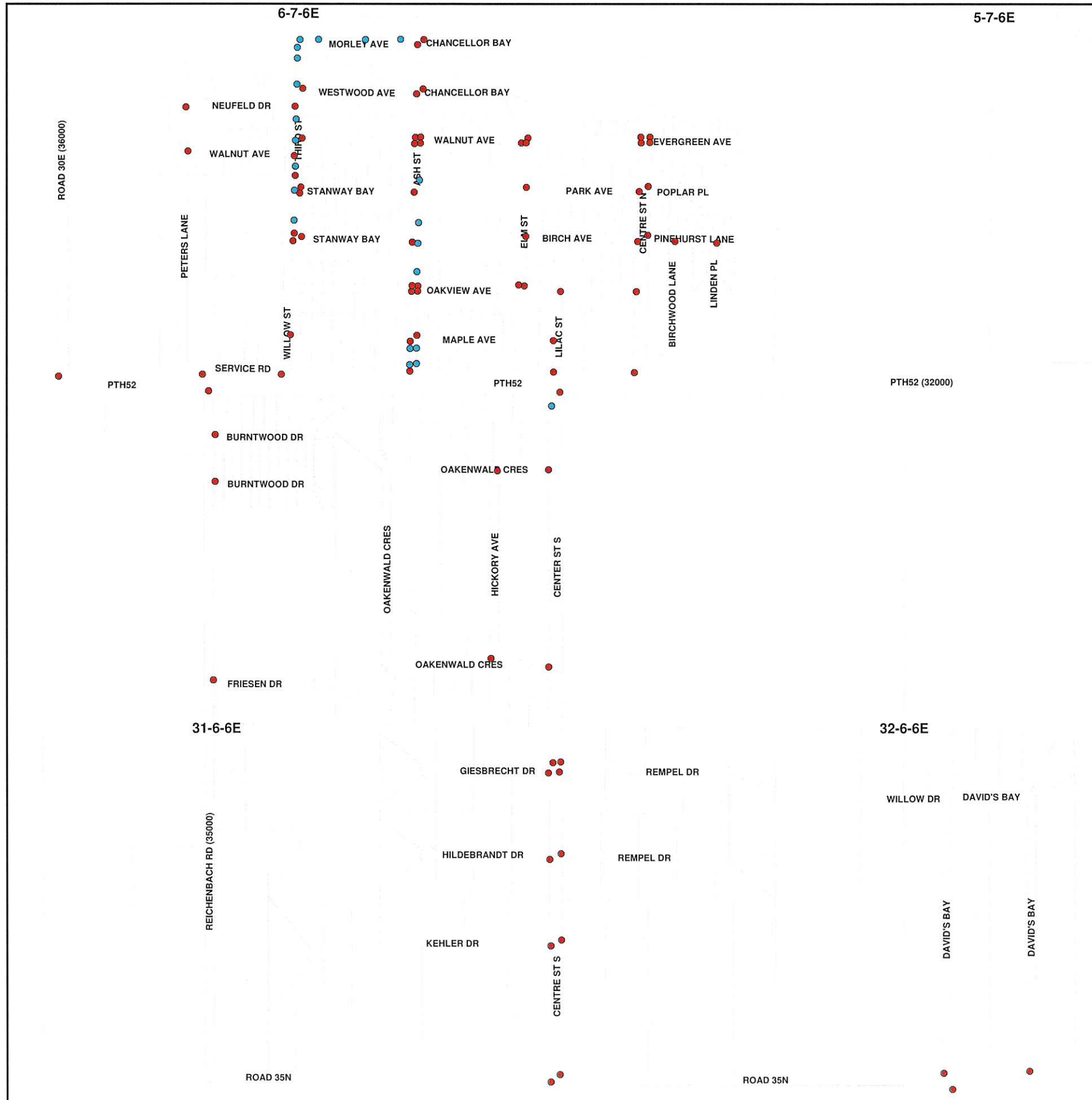
Legend

- No Parking
- Stop



Date: January, 2010

Revised To: March, 2012

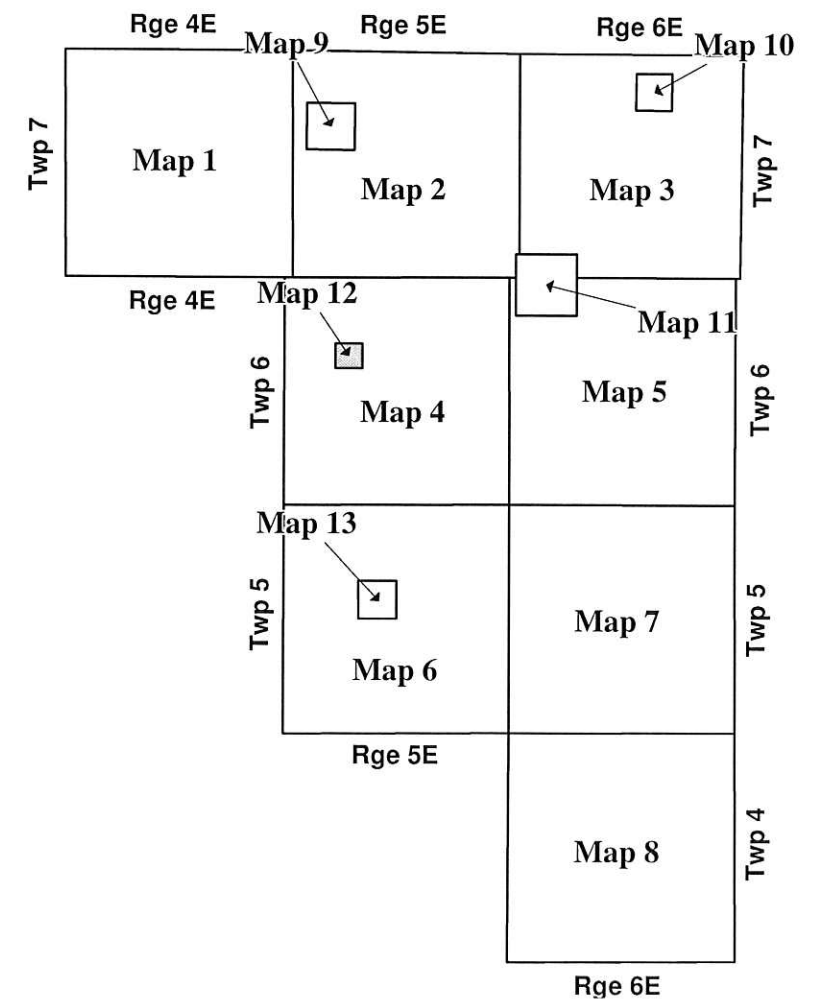


RM of HANOVER BY-LAW 2274

Map 12 - Kleefeld

Legend

- Stop



COLLEGE AVE

DEERPATH DR

ASPEN DR

ASPEN DR

BERGEN BAY

BERGEN BAY

TANGLEWOOD BAY

TANGLEWOOD BAY

FOURTH ST SW

THIRD ST SW

COLLEGE AVE

SECOND ST SW

PARK AVE

FRIESEN AVE

SPRUCE DR

FIRST ST SW

FIRST ST NW

FIRST AVE N

MAIN ST S

MAIN ST N

ROAD 34N (26000)

Date: January, 2010

Revised To: March, 2012

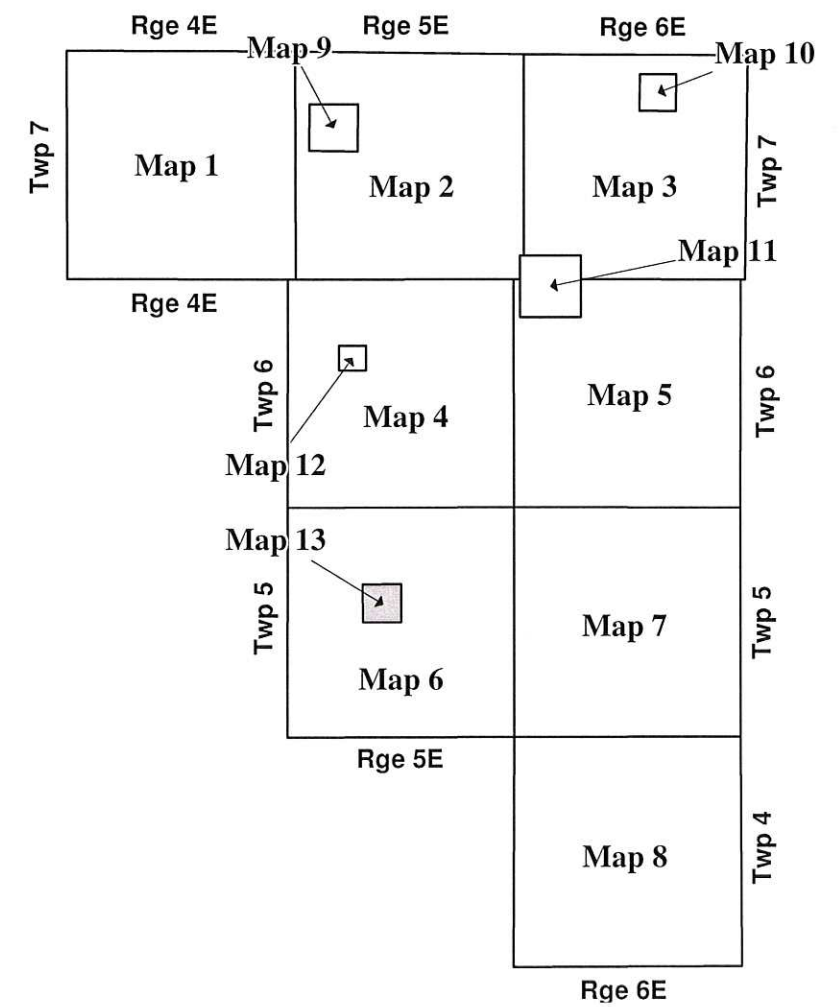
RM of HANOVER BY-LAW 2274

Map 13 - Grunthal

Legend

- No Parking
- Stop

Legend



Date: January, 2010

Revised To: March, 2012

