

**R. M. of Hanover
Hazard Analysis
&
Response Plan**

Table of Contents

Section 1: Hazardous Products Fire/Spill

Section 2: Ice Storm/Blizzard

Section 3: Severe Summer Storm/Tornado

Section 4: Utility Outage

Section 5: Dangerous Goods Routes

Section 6: Spring Thaw Emergency Plan

Section 7: Institutional Facility/Multi Unit/Apartment Evacuation

Section 8: Municipal Hazard Management Priorities and Financial Commitment

Section 9: Population Counts and Map Layouts

Section 10: Airplane Crashes

R.M. of Hanover

Hazard Analysis

HAZARDOUS PRODUCTS FIRE/SPILL

**The R.M. of Hanover
Hazard Analysis**

HAZARDOUS PRODUCTS FIRE/SPILL

Nature of Hazard:

A Hazard could originate from an accidental or purposely set fire or product spill where the presence of products hazardous to the health and safety of the 1st Response Units, the Public-at-large or the Environment is present at the scene or beyond through dispersal of gases, liquids or solids through smoke or drainage dispersal.

The involvement of the EOC team would be based on the nature of the product and the potential for dispersal beyond the fire scene. Climatic condition would have a dramatic impact on making the decision to access resources beyond 1st Response Units and municipal operating personnel.

See Section 9 for Population Counts and Map Layouts

NOTE:

A listing of Multi-unit / Apartment Facilities within the R.M. of Hanover is located in the Evacuation Section of the Emergency Plan

Section 1

Hazardous Products Fire/Spill

Type of Issue: Hazardous Products Fire/Spill:

Location	Product(s)	Life Safety Issue(s)	Service Requirement(s)
<p>7-4E; Map 1, CP Rail Line runs the entire length of the west boundary of the municipality.</p> <p>New Bothwell Fire</p>	<p>Unknown amounts of various chemicals and hazardous products travel through the RM on a regular basis.</p>	<ul style="list-style-type: none"> - Explosion - Gas & Smoke Dispersal - Environmental Contamination 	<ul style="list-style-type: none"> - Evacuation / Shelter in Place <ul style="list-style-type: none"> - Agricultural Area - Town of Niverville - Property Damage - Municipal Infrastructure
<p>7-4E; Map 1, Site 1 Paterson Grain -18036 PR305 (Niverville- Hwy305 & CP Rail Line) Contact: 204-388-6565 Have Their own Emergency Plan New Bothwell Fire</p>	<p>60metric tonnes Anhydrous Ammonia (UN 1005) 5 storage tanks with combined volume of 800 metric tonnes liquid fertilizer</p>	<ul style="list-style-type: none"> - Explosion - Gas & Smoke Dispersal - Environmental Contamination 	<ul style="list-style-type: none"> - Evacuation / Shelter in Place <ul style="list-style-type: none"> - Agricultural Area (Farms & residence contact numbers included in Paterson Grain Emergency Plan). - Town of Niverville - Property Damage - Municipal Infrastructure
<p>7-4E; Map 1, Site 2 Prairie Sky Aviation – 18157 Rd. 39 N. Contact 204-388-4303 Have Their own Emergency Plan New Bothwell Fire</p>	<p>Unknown amounts of various pesticide and herbicide chemicals as well as fuels (5- 3500 L & 1-1750 L above ground tanks that could hold quantities of diesel, gasoline and Jet A fuel) depending on time of year.</p>	<ul style="list-style-type: none"> - Explosion - Gas & Smoke Dispersal - Environmental Contamination 	<ul style="list-style-type: none"> - Evacuation / Shelter in Place <ul style="list-style-type: none"> - Agricultural Area - Town of Niverville - Property Damage - Municipal Infrastructure
<p>7-4E; Map 1, Sites 3 & 4 Trans Canada Natural Gas pipeline travels along the west side of Rd.20 E from the North to South boundaries of the RM. Transfer stations are located on the south side of both PR 311 (#3) & PR 305 (#4) New Bothwell Fire</p>	<p>Natural Gas fire and explosion could occur should the transmission pipe or either transfer station be damaged. The volume of gas and the time for it to disperse would be a major concern.</p>	<ul style="list-style-type: none"> - Explosion - Gas & Smoke Dispersal - Environmental Contamination 	<ul style="list-style-type: none"> - Evacuation / Shelter in Place <ul style="list-style-type: none"> - Agricultural Area - Town of Niverville - Property Damage - Municipal Infrastructure
<p>7-4E; Map 1, Site 5 Tourond Superette 37008 PTH 59 Contact 204-388-4595 New Bothwell Fire</p>	<p>(1) aboveground compartmented tank / 2,750 L of Gasoline and 7,500 L of Diesel</p>	<ul style="list-style-type: none"> Explosion - Gas & Smoke Dispersal - Environmental Contamination 	<ul style="list-style-type: none"> - Evacuation / Shelter in Place <ul style="list-style-type: none"> Rural residential and farming in the immediate area. - Municipal Infrastructure
<p>7-4E; Map 1, Site 6 Randolph Feed Mill 36057 Rd23E Have their own Emergency Plan Kleefeld Fire</p>	<p>Structure is metal, 120 ft. high with a pad size of 160’ x 80’. It is a class 2 facility so has dust and fire suppression in place. 2 (4000 L) diesel tanks located on the property. 11 people on site at peak hours.</p>	<ul style="list-style-type: none"> Building size and contents may cause smoke and gas dispersal. - Contaminated water run off - Environmental Contamination 	<ul style="list-style-type: none"> Evacuation / Shelter in Place (Limited requirement) <ul style="list-style-type: none"> - farming in the immediate area - Municipal Infrastructure

Section 1

Hazardous Products Fire/Spill

Type of Issue: Hazardous Products Fire/Spill:

Location	Product(s)	Life Safety Issue(s)	Service Requirement(s)
<p>7-5E; Map 2 There are no known hazardous sites in this area other than major agriculture (hog, chicken, dairy, and grain farms) New Bothwell, Kleefeld & Blumenort Fire</p>		<ul style="list-style-type: none"> - Gas & Smoke Dispersal - Environmental Contamination 	Evacuation (Limited requirement) - farming in the immediate area - Municipal Infrastructure
<p>7-6E; Map 3, Site 1 HD Trucking; 40105 Rd. 30E. Blumenort Fire</p>	Auto wrecking yard and body shop	<ul style="list-style-type: none"> - Gas & Smoke Dispersal - Environmental Contamination 	Evacuation (Limited requirement) - farming in the immediate area - Municipal Infrastructure
<p>7-6E; Map 3, Site 2 Clearview Coop Agriculture Center 33124 Rd. 39N; Contact 204-326-9921 Have their own Emergency Plan Blumenort Fire</p>	Varying amounts of pesticide and herbicide chemicals as well as fertilizer products depending on time of year.	<ul style="list-style-type: none"> - Gas & Smoke Dispersal - Environmental Contamination is not an issue; containment in place for any runoff of fire extinguishing by-products. 	<ul style="list-style-type: none"> - Evacuation / Shelter in Place - Agricultural Area - Steinbach & Blumenort nearest urban centers - Limited property damage - Limited municipal infrastructure
<p>Remainder of 7-6E; Map 3 There are no known hazardous sites in this area other than major agriculture (hog, chicken, dairy, and grain farms) Blumenort & Kleefeld Fire</p>		<ul style="list-style-type: none"> - Gas & Smoke Dispersal - Environmental Contamination 	Evacuation (Limited requirement) - farming in the immediate area - Municipal Infrastructure
<p>6-5E; Map 4 -Major agriculture (hog, chicken, dairy, and grain farms) in this area. -Several Rural Residential developments spread throughout this township. Kleefeld Fire</p>		<ul style="list-style-type: none"> - Gas & Smoke Dispersal - Environmental Contamination 	Evacuation (Limited requirement) - farming in the immediate area - Municipal Infrastructure

Section 1

Hazardous Products Fire/Spill

Type of Issue: Hazardous Products Fire/Spill:

Location	Product(s)	Life Safety Issue(s)	Service Requirement(s)
<p>6-6E; Map 5, Site 1 Harv's Air 33149 RD33N 204-326-2434 Steinbach Fire</p>	<p>3300gal (15,000L) Aviation gas in above ground tank – PIN# 1863.</p>	<p>- Explosion - Gas & Smoke Dispersal - Environmental Contamination</p>	<p>- Evacuation Rural residential and farming in the immediate area. Municipal Infrastructure</p>
<p>6-6E; MAP 5, Site 2 Hanover Farms Inc. Feed Mill 33073 PTH12 - 204-326-6706 Have their Emergency Plan Steinbach Fire</p>	<p>Limited amounts of propane and compressed gasses for welding plus (16) 18 tonne and (6) 100 tonne grain bins on site.</p>	<p>- Explosion - Gas & Smoke Dispersal - Environmental Contamination</p>	<p>- Evacuation Rural residential and farming in the immediate area. Municipal Infrastructure</p>
<p>6-6E; MAP 5 - Major agriculture (hog, chicken, dairy, and grain farms) in this area. -Several Rural Residential developments spread throughout this township. Kleefeld & Steinbach Fire</p>		<p>- Gas & Smoke Dispersal - Environmental Contamination</p>	<p>Evacuation (Limited requirement) - farming in the immediate area - Municipal Infrastructure</p>
<p>5-5E; Map 6 There are no known hazardous sites in this area other than major agriculture (hog, chicken, dairy, and grain farms) Grunthal Fire</p>		<p>- Gas & Smoke Dispersal - Environmental Contamination</p>	<p>Evacuation (Limited requirement) - farming in the immediate area - Municipal Infrastructure</p>
<p>5-6E; Map 7, Site 1 Sarto General Store; 31115 PR 205 Grunthal Fire</p>	<p>10,000 L aboveground Gasoline tank and limited 20 lb. propane tanks</p>	<p>Explosion - Gas & Smoke Dispersal - Environmental Contamination</p>	<p>- Evacuation Rural residential and farming in the immediate area. -Municipal Infrastructure</p>
<p>5-6E; Map 7 There are no known hazardous sites in this area other than major agriculture (hog, chicken, dairy, and grain farms) Grunthal Fire</p>		<p>- Gas & Smoke Dispersal - Environmental Contamination</p>	<p>Evacuation (Limited requirement) - farming in the immediate area - Municipal Infrastructure</p>
<p>4-6E; Map 8 -Major agriculture (hog, chicken, dairy, and grain farms) in this area. -Limited Rural Residential development in this township. Grunthal Fire</p>		<p>- Gas & Smoke Dispersal - Environmental Contamination</p>	<p>Evacuation (Limited requirement) - farming in the immediate area - Municipal Infrastructure</p>

Type of Issue: Hazardous Products Fire/Spill

Location	Product(s)	Life Safety Issue(s)	Service Requirement(s)
<p>Map 9; New Bothwell- Site 1 Bothwell Cheese Inc 61 Main St. N Contact: 388-4666 Bothwell Fire.</p>	<p>Size of building could create huge amounts of toxic smoke and water run off</p>	<p>- Gas & Smoke dispersal - Environmental Contamination Occupied from 2:00AM TO 5:00PM Up to 45 people on site at any one time</p>	<p>- Evacuation - Residential Area New Bothwell School Business Section - Property Damage</p>
<p>Map 9; New Bothwell- Site 2 Bothwell School 25 Crown Valley Rd. E. Contact: 388-4422 Bothwell Fire</p>	<p>Size of building could create huge amounts of toxic smoke and water run off</p>	<p>- Gas & Smoke dispersal - Environmental Contamination</p>	<p>- Evacuation - Residential Area - Business Section - Municipal Infrastructure</p>
<p>Map 9; New Bothwell- Site 3 Colorado Trailer Court Crown Valley Rd. East. See Evac. Sect of Emergency Plan for Contact information. Bothwell Fire Dept.</p>	<p>The trailers in this court are vulnerable to conflagration because of the limited distance between each and the flammability of the exposed walls</p>	<p>- Gas & Smoke dispersal - Environmental Contamination</p>	<p>- Evacuation - Residential Area - Business Section - Municipal Infrastructure -Property Damage</p>
<p>Map 9; New Bothwell- Site 4 New B's Café & Store 20 Crown Valley Rd. West Contact 204-388-9585 Bothwell Fire</p>	<p>15,000 litres above ground gasoline storage tank located very near the Fire Hall, other businesses and residences.</p>	<p>- Explosion - Gas & Smoke dispersal - Environmental Contamination</p>	<p>- Evacuation - Residential Area - Business Section - Municipal Infrastructure - Property Damage</p>
<p>Map 9; New Bothwell Truck Traffic spill Hwy 311 & 216 Bothwell Fire</p>	<p>- Various Products - Fuel(s) - Fertilizers (Anhydrous)</p>	<p>- Explosion - Gas & Smoke Dispersal - Environmental Contamination</p>	<p>- Evacuation - Residential Area New Bothwell School Business Section - Property Damage</p>

Section 1

Hazardous Products Fire/Spill

Type of Issue: Hazardous Products Fire/Spill

Location	Product(s)	Life Safety Issue(s)	Service Requirement(s)
<p>Map 10; Blumenort –Site 1 JT’s Store & Diner 40 Penner Dr. Blumenort Contact 204-326-1640</p> <p>Blumenort Fire</p>	<p>Up to 52,000 liters of gasoline and 25,000 liters of diesel stored in 1 above ground storage tank. in addition to 20 unit storage of 20 lb. propane tanks.</p>	<p>- Explosion - Smoke dispersal - Environmental Contamination</p>	<p>- Evacuation - Industrial area - Blumenort School, Oakwood Place & Oakwiew Manor - Residential Area - Municipal Infrastructure - Property Damage</p>
<p>Map 10; Blumenort- site 2 KK Penner & Sons, Hwy 12A Blumenort - 326-6419</p> <p>Blumenort Fire</p>	<p>-Huge quantities of Tires</p>	<p>- Smoke dispersal - Environmental Contamination</p>	<p>- Evacuation - Industrial area - Blumenort School, Oakwood Place & Oakwiew Manor - Residential Area - Municipal Infrastructure - Property Damage</p>
<p>Map 10; Blumenort- Site 3 Penner Farm Services 10 Penner Dr. Blumenort - 326-3781</p> <p>Blumenort Fire</p>	<p>Various Chemicals & products</p>	<p>- Explosion - Gas & Smoke dispersal - Environmental Contamination</p>	<p>- Evacuation - Industrial area - Blumenort School, Oakwood Place & Oakwiew Manor - Residential Area - Municipal Infrastructure - Property Damage</p>
<p>Map 10; Blumenort-Site 4 South East Logging, Pallet & Wood Products 15 & 23 Penner Dr. Blumenort – 326-8899</p> <p>Blumenort Fire</p>	<p>Size of buildings and materials stored on site could create huge amounts of toxic smoke and water run off</p>	<p>- Smoke dispersal - Environmental Contamination</p>	<p>- Evacuation - Industrial area - Blumenort School, Oakwood Place & Oakwiew Manor - Residential Area - Municipal Infrastructure - Property Damage</p>
<p>Map 10; Blumenort-Site 5 Granny’s Poultry Co-op Blumenort – 326-3448</p> <p>Blumenort Fire</p>	<p>- 7500 lbs. of Liquid Ammonia in the cooling system and small (300lb) above ground pressure tanks.</p>	<p>- Explosion - Toxic gas if leak occurs. - Gas & Smoke dispersal - Environmental Contamination Up to 400 employees on day & evening shift with up to 600 on site at shift change (at 2:00PM & 4:30PM)</p>	<p>- - Evacuation - Industrial area - Blumenort School, Oakwood Place & Oakwiew Manor - Residential Area - Municipal Infrastructure - Property Damage</p>

Section 1

Hazardous Products Fire/Spill

Type of Issue: Hazardous Products Fire/Spill

Location	Product(s)	Life Safety Issue(s)	Service Requirement(s)
<p>Map 10; Blumenort-Site 6 Steve's Livestock Transport 214 Centre Ave Blumenort – 326-6380</p> <p>Blumenort Fire</p>	<p>Size of buildings and materials stored on site could create huge amounts of toxic smoke and water run off</p>	<p>- Smoke dispersal - Environmental Contamination</p>	<p>- Evacuation</p> <ul style="list-style-type: none"> - Industrial area - Blumenort School - Oakwood Place & Oakwiew Manor - Residential Area <p>- Municipal Infrastructure</p>
<p>Map 10; Blumenort-Site 7 Blumenort School 10 Park Rd Blumenort 326-1757</p> <p>Blumenort Fire</p>	<p>Size of buildings could create huge amounts of toxic smoke and water run off</p>	<p>- Smoke dispersal - Environmental Contamination</p>	<p>-- Evacuation</p> <ul style="list-style-type: none"> - Industrial area - Blumenort School, Oakwood Place & Oakwiew Manor - Residential Area <p>- Municipal Infrastructure - Property Damage</p>
<p>Map 10; Blumenort Truck Traffic spill Hwy12 & 311</p> <p>Blumenort Fire</p>	<p>- Various Products - Fuel(s) - Fertilizers (Anhydrous)</p>	<p>- Explosion - Gas & Smoke Dispersal - Environmental Contamination</p>	<p>- Evacuation</p> <ul style="list-style-type: none"> - Industrial area - Blumenort School - Oakwood Place & Oakwiew Manor - Residential Area <p>- Municipal Infrastructure</p>
<p>-</p>	<p>-</p>	<p>-</p>	<p>-</p>
<p>-</p>	<p>-</p>	<p>-</p>	<p>-</p>

Section 1

Hazardous Products Fire/Spill

Type of Issue: Hazardous Products Fire/Spill

Location	Product(s)	Life Safety Issue(s)	Service Requirement(s)
<p>Map 11; Mitchell-Site 1 Mitchell Arena & Senior Rec. Centre; 138 & 130 Ash Street Contact: 326-3703 (Arena) 326-6944(Senior Rec. Centre) Kleefeld Fire</p>	<p>- Size of buildings could create huge amounts of toxic smoke and water run off</p>	<p>- Smoke dispersal - Environmental Contamination</p>	<p>- Evacuation - Residential Area Mitchell Elementary School Mitchell Middle School - Property Damage -Municipal Infrastructure</p>
<p>Map 11; Mitchell-Site 2 Mitchell Elementary School 99 Stanway Bay Contact: 326-6622 Kleefeld Fire</p>	<p>- Size of building could create huge amounts of toxic smoke and water run off</p>	<p>- Smoke dispersal - Environmental Contamination</p>	<p>- Evacuation - Residential Area Mitchell Middle School - Property Damage -Municipal Infrastructure</p>
<p>Map 11; Mitchell-Site 3 Mitchell Middle School 203 3rd St. Contact: 320-9488 Kleefeld Fire</p>	<p>- Size of building could create huge amounts of toxic smoke and water run off</p>	<p>- Smoke dispersal - Environmental Contamination</p>	<p>- Evacuation - Residential Area Mitchell Elementary School - Property Damage</p>
<p>Map 11; Mitchell-Site 4 Mitchell Motors – 289 PTH 52 Mitchell Steinbach Fire</p>	<p>- Body Shop paint booth supplies could produce toxic smoke and water run off</p>	<p>Smoke dispersal - Environmental Contamination</p>	<p>Evacuation - Residential Area Mitchell Elementary School Mitchell Middle School - Municipal Infrastructure</p>
<p>Map 11; Mitchell-Site 5 VD Cabinets – 363 PTH 52 Mitchell Kleefeld Fire</p>	<p>Varnish and paints plus materials used in producing cabinets could produce toxic smoke and water run off</p>	<p>Smoke dispersal - Environmental Contamination</p>	<p>Evacuation - Residential Area Mitchell Elementary School Mitchell Middle School - Municipal Infrastructure</p>
<p>Map 11; Mitchell Truck Traffic spill; Hwy 52 Kleefeld Fire</p>	<p>- Various Products - Fuel(s) - Fertilizers (Anhydrous)</p>	<p>- Explosion - Gas & Smoke Dispersal - Environmental Contamination</p>	<p>Evacuation - Residential Area Mitchell Elementary School Mitchell Middle School - Municipal Infrastructure</p>

Section 1

Hazardous Products Fire/Spill

Type of Issue: Hazardous Products Fire/Spill

Location	Product(s)	Life Safety Issue(s)	Service Requirement(s)
<p>Map 12; Kleefeld-Site 1 Tri Me Cabinets & Millwork Ltd. 65 Main St. S – 377-4292</p> <p>Kleefeld Fire</p>	<p>Size & contents of building could create huge amounts of toxic smoke and water run off</p>	<ul style="list-style-type: none"> - Explosion - Smoke dispersal - Environmental Contamination 	<ul style="list-style-type: none"> - Evacuation <ul style="list-style-type: none"> - Kleefeld School - Business District - Residential Area - Municipal Infrastructure
<p>Map 12; Kleefeld-Site 2 Kleefeld School 101 Friesen Ave - 377-4751 Kleefeld Fire Dept</p>	<p>Size & contents of building could create huge amounts of toxic smoke and water run off</p>	<ul style="list-style-type: none"> - Explosion - Smoke dispersal - Environmental Contamination 	<ul style="list-style-type: none"> - Evacuation <ul style="list-style-type: none"> - Business District - Residential Area - Municipal Infrastructure
<p>Map 12; Kleefeld-Site 3 Kleefeld Water Treatment Plant 26 College Ave</p> <p>Kleefeld Fire</p>	<p>5 – 55 litre Barrels of Liquid Chlorine</p>	<ul style="list-style-type: none"> - Explosion - Gas Dispersal - Environmental Contamination 	<ul style="list-style-type: none"> - Evacuation <ul style="list-style-type: none"> - Kleefeld School - Business District - Residential Area - Municipal Infrastructure
<p>Map 12; Kleefeld-Site 4 Twin Creek Wood Craft 116 Main St. N Kleefeld Fire</p>	<p>Size & contents of building could create huge amounts of toxic smoke and water run off</p>	<ul style="list-style-type: none"> - Explosion - Smoke dispersal - Environmental Contamination 	<ul style="list-style-type: none"> - Evacuation <ul style="list-style-type: none"> - Kleefeld School - Business District - Residential Area - Municipal Infrastructure
<p>Map 12; Kleefeld-Site Truck Traffic spill PTH 216 Kleefeld Fire</p>	<ul style="list-style-type: none"> - Various Products - Fuel(s) - Fertilizers (Anhydrous) 	<ul style="list-style-type: none"> - Explosion - Gas & Smoke Dispersal - Environmental Contamination 	<ul style="list-style-type: none"> - Evacuation <ul style="list-style-type: none"> - Kleefeld School - Business District - Residential Area - Municipal Infrastructure

Section 1

Hazardous Products Fire/Spill

Type of Issue: Hazardous Products Fire/Spill

Location	Product(s)	Life Safety Issue(s)	Service Requirement(s)
<p>Map 13; Grunthal- Site 1 South Oaks School 202 Southwood St. Contact: 434-6165</p> <p>Grunthal Fire</p>	Size & contents of building could create huge amounts of toxic smoke and water run off	<ul style="list-style-type: none"> - Explosion - Gas & Smoke dispersal - Environmental Contamination 	<ul style="list-style-type: none"> - Evacuation - Green Valley School, South Oaks School, Menno Home - Business District - Residential Area - Municipal Infrastructure
<p>Map 13; Grunthal -Site 2 Green Valley School 212 Oak Av. Contact: 434-6415</p> <p>Grunthal Fire</p>	Size & contents of building could create huge amounts of toxic smoke and water run off	<ul style="list-style-type: none"> - Explosion - Gas & Smoke dispersal - Environmental Contamination 	<ul style="list-style-type: none"> - Evacuation - Green Valley School, South Oaks School, Menno Home - Business District - Residential Area - Municipal Infrastructure
<p>Map 13; Grunthal-Site 3 Menno Home for the Aged 235 Park St. Contact: 434-6496</p> <p>Grunthal Fire</p>	Size & contents of building could create huge amounts of toxic smoke and water runoff. Evacuation of residents extremely difficult	<ul style="list-style-type: none"> - Smoke dispersal - Environmental Contamination 	<ul style="list-style-type: none"> - Evacuation - Green Valley School, South Oaks School, Menno Home - Business District - Residential Area - Municipal Infrastructure
<p>Map 13; Grunthal- Site 4 Oaklane Grocery 222 Main St. Contact 204-434-6788.</p> <p>Grunthal Fire</p>	75,000 liter above ground fuel storage in close proximity to Menno Home, schools and residential area.	<ul style="list-style-type: none"> - Explosion - Gas & Smoke Dispersal - Contaminated water run off - Environmental Contamination 	<ul style="list-style-type: none"> - Evacuation - Green Valley School, South Oaks School, Menno Home - Business District - Residential Area - Municipal Infrastructure
<p>Map 13; Grunthal- Site 5 Grunthal Water Treatment Plant 207 Ash St. Contact:</p> <p>Grunthal Fire</p>	- (10) 20 litre liquid Chlorine containers	<ul style="list-style-type: none"> - Explosion - Gas Dispersal - Environmental Contamination 	<ul style="list-style-type: none"> - Evacuation - Green Valley School, South Oaks School, Menno Home - Business District - Residential Area - Municipal Infrastructure
<p>Map 13; Grunthal- Site 6 Grunthal Welding & Supply, 59 Elm Av. Contact 204-434-6750</p> <p>Grunthal Fire</p>	Unknown quantity & type of compressed gasses or other dangerous products are stored on site 11242018.	<ul style="list-style-type: none"> Explosion - Smoke dispersal - Contaminated water run off - Environmental Contamination 	<ul style="list-style-type: none"> - Evacuation - Green Valley School, South Oaks School, Menno Home - Business District - Residential Area - Municipal Infrastructure

Section 1

Hazardous Products Fire/Spill

Type of Issue: Hazardous Products Fire/Spill

Location	Product(s)	Life Safety Issue(s)	Service Requirement(s)
<p>Map 13; Grunthal- Site 7 Parmalat Canada Meadowland Dairy Products, 26 Elm Av. Contact: 434-6408 Grunthal Fire</p>	<p>Size & contents of building could create huge amounts of toxic smoke and water run off</p>	<p>- Explosion - Toxic smoke dispersal - Contaminated water run off - Environmental Contamination Up to 30 people on site from 4:30AM to 10:00PM with up to 40 occupants at 1:00 PM shift change.</p>	<p>- Evacuation - Green Valley School, South Oaks School, Menno - Business District - Residential Area - Municipal Infrastructure</p>
<p>Map 13; Grunthal- Site-8 Carlton Hatcheries 27041 PR 216 Contact: 434-6886 Grunthal Fire</p>	<p>Size & contents of building could create huge amounts of toxic smoke and water runoff.</p>	<p>- Explosion - Smoke dispersal - Contaminated water run off - Environmental Contamination</p>	<p>- Evacuation - Green Valley School, South Oaks School, Menno Home - Business District - Residential Area - Municipal Infrastructure</p>
<p>Map 13; Grunthal- Site9 Master Feeds 27017 PR216 Contact: 434-6881 Grunthal Fire</p>	<p>Feed mill contains grains and small amount of dry veterinary supplies. Store also has small amount of injectable medication</p>	<p>- Explosion - Smoke dispersal - Contaminated water run off - Environmental Contamination</p>	<p>- Evacuation - Green Valley School, South Oaks School, Menno Home - Business District - Residential Area - Municipal Infrastructure</p>
<p>Map 13; Grunthal- Site10 Tristar Dairy Centre Ltd 26147 Road 27N Contact 434-6801 (Emergency pager 326-8711) Grunthal Fire</p>	<p>Various cleaning supplies and materials containing chlorine, acids and corrosives in amounts large enough to be dangerous to firefighters and the general public. WHIMIS sheets available on site.</p>	<p>- Explosion - Smoke dispersal - Contaminated water run off - Environmental Contamination</p>	<p>- Evacuation - Green Valley School, South Oaks School, Menno Home - Business District - Residential Area - Municipal Infrastructure</p>
<p>Map 13; Grunthal Truck Traffic spill, Hwy 205 & 216 Grunthal Fire</p>	<p>- Various Products - Fuel(s) - Fertilizers (Anhydrous)</p>	<p>- Explosion - Smoke dispersal - Contaminated water run off - Environmental Contamination</p>	<p>- Evacuation - Green Valley School, South Oaks School, Menno Home - Business District - Residential Area - Municipal Infrastructure</p>

Map # 1: Township 7-4E**Known Possible Hazard Sites:**

- CP Rail Line runs the entire length of the west boundary of the municipality
- Site 1 Paterson Grain Bulk Plant; 18036 PR305
- Site 2 Prairie Sky Aviation; 18157 Rd. 39N
- TransCanada Natural Gas pipe line traverses the RM from North to South on the west side of RD.20E
- Site 3 Trans Canada transfer/distribution station located on the south side of PR 311
- Site 4 MB Hydro Gas Division distribution station located on the south side of PR 305
- Site 5 Tourond Superette Gas Bar; 37008 PTH 59
- Site 6 Randolph Feed Mill; 36057 Rd.23E

Potential Resource Allocation:

- Police Services Site Security & Evacuation
- Health Services
 - ✓ Hospital Treatment of Injured
 - ✓ Ambulance Site Triage, Transportation, Specialty Evacuation
- Fire Services Fire Scene Operations
- Transportation & Operation Services
 - ✓ CP Rail line passes on the west side of the Municipality
 - ✓ Utility & Operations Personnel
 - ✓ School Division
- Emergency Social Services
 - ✓ Accommodations
 - ✓ Registration & Inquiry
 - ✓ Secondary & Mobile R & I

Residential Concerns:

The nearest locations for urban populations are greater than 1 mile north of the Paterson Grain site in the Town of Niverville. Niverville has an Emergency Plan for evacuation. Notification of the Emergency Coordinator of an impending emergency would be required. **Note: Paterson Grain has an Emergency Plan that would be enacted prior to the R.M. plan and would warn all local residents to evacuate if necessary.**

The CP Rail line has the potential for a major fire with unknown amounts of various chemicals and hazardous products that travel through the RM on a regular basis. This could require a full or partial evacuation of not only the town of Niverville but also several rural farm residences located in proximity to the rail line.

The remainder of the sites may require evacuation should there be a fire or gas explosion although the closest urban centre to any of them would be Niverville which is approximately 1 mile west of the TC gas transfer station (site 4) on PR 311 .

Facility Concerns:

- There are no facility concerns outside of the town of Niverville.

See Section 9 for Population Counts and Map Layouts for this Township.**Environmental Concerns:**

The level of environmental concern relates to two (3) primary issues:

- Control of a spill & water run off to Prevent Environmental Contamination
- Control of a spill & water run off to Prevent Municipal Infrastructure Contamination
- Involvement of Manitoba Environment for assistance and monitoring air quality

Map # 3: Township 7-6E

Known Possible Hazard Sites:

- Site 1 - HD Trucking – 40105 Rd 30E (storage of derelict vehicles and body shop)
- Site 2 – Clearview Co-op Agricenter – 33124 Rd 39N (varying amounts of Fertilizer & Pesticides)
- There are no additional known hazardous sites in this area other than major agriculture (hog, chicken, dairy, and grain farms).

Potential Resource Allocation:

- Police Services Site Security & Evacuation
- Health Services
 - ✓ Hospital Treatment of Injured
 - ✓ Ambulance Site Triage, Transportation, Specialty Evacuation
- Fire Services Fire Scene Operations
- Transportation & Operation Services
 - ✓ CP Rail line passes on the west side of the Municipality
 - ✓ Utility & Operations Personnel
 - ✓ School Division

- Emergency Social Services
 - ✓ Accommodations
 - ✓ Registration & Inquiry
 - ✓ Secondary & Mobile R & I

Residential Concerns:

A major fire at HD trucking, 40105 Rd. 30 E. could cause smoke and toxic gasses to require evacuation of all or parts of the nearby rural residences in the area.

A major fire at Clearview Co-op Agricenter, 33124 Rd 39N, could cause smoke and toxic gasses to require Shelter in Place or evacuation of all or parts of the nearby rural residences in the area. Depending on wind direction and conditions, The City of Steinbach, community of Blumenort and the community of Mitchell could also be impacted.

A major agricultural complex fire could cause smoke and toxic gasses to require evacuations of all or parts of the nearby rural residences as well as the communities of Blumenort (Map 10), Mitchell (Map 11) and, in the South East corner of this area, the City of Steinbach.

Facility Concerns:

- There are no known facility concerns in this area.
- **See Map 10 for facility concerns in Blumenort and Map 11 for any facility concerns in Mitchell.**

See Section 9 for Population Counts and Map Layouts for this Township.

Environmental Concerns:

The level of environmental concern relates to two (3) primary issues:

- Control of a spill & water run off to Prevent Environmental Contamination
- Control of a spill & water run off to Prevent Municipal Infrastructure Contamination
- Involvement of Manitoba Environment for assistance and monitoring air quality

Map # 4: Township 6-5E

Known Possible Hazard Sites:

- There are no known hazardous sites in this area other than major agriculture (hog, chicken, dairy, and grain farms).
- Several Rural Residential developments spread throughout this township

Potential Resource Allocation:

- Police Services Site Security & Evacuation
- Health Services
 - ✓ Hospital Treatment of Injured
 - ✓ Ambulance Site Triage, Transportation, Specialty Evacuation
- Fire Services Fire Scene Operations
- Transportation & Operation Services
 - ✓ CP Rail line passes on the west side of the Municipality
 - ✓ Utility & Operations Personnel
 - ✓ School Division
- Emergency Social Services
 - ✓ Accommodations
 - ✓ Registration & Inquiry
 - ✓ Secondary & Mobile R & I

Residential Concerns:

A major agricultural complex fire could cause smoke and toxic gasses to require evacuations of all or parts of the nearby rural residences as well as the communities of Kleefeld (Map 12) and adjacent to the North East corner of this area, the LUD of Mitchell (Map 11).

Facility Concerns:

- There are no known facility concerns in this area.
- **See Map 12 for facility concerns in Kleefeld and Map 11 for any facility concerns in Mitchell.**

See Section 9 for Population Counts and Map Layouts for this Township.

Environmental Concerns:

The level of environmental concern relates to two (3) primary issues:

- Control of a spill & water run off to Prevent Environmental Contamination
- Control of a spill & water run off to Prevent Municipal Infrastructure Contamination
- Involvement of Manitoba Environment for assistance and monitoring air quality

Map # 5: Township 6-6E

Known Possible Hazard Sites:

- Site 1 – Harv’s Air
- Site 2 - Hanover Farms Inc. Feed Mill
- There are no known hazardous sites in this area other than major agriculture (hog, chicken, dairy, and grain farms).
- Several Rural Residential developments spread throughout this township

Potential Resource Allocation:

- Police Services Site Security & Evacuation
- Health Services
 - ✓ Hospital Treatment of Injured
 - ✓ Ambulance Site Triage, Transportation, Specialty Evacuation
- Fire Services Fire Scene Operations
- Transportation & Operation Services
 - ✓ CP Rail line passes on the west side of the Municipality
 - ✓ Utility & Operations Personnel
 - ✓ School Division
- Emergency Social Services
 - ✓ Accommodations
 - ✓ Registration & Inquiry
 - ✓ Secondary & Mobile R & I

Residential Concerns:

A major fire at Harv’s Air or the Hanover Farms Inc. Feed Mill could cause smoke and toxic gasses to require evacuations of all or parts of the nearby rural residences as well as the City of Steinbach.

A major agricultural complex or wild fire could cause smoke and toxic gasses to require evacuations of all or parts of the nearby rural residences as well as the communities of the LUD of Mitchell (Map 11) and the City of Steinbach.

Facility Concerns:

- There are no known facility concerns in this area.
- **See Map 11 for any facility concerns in Mitchell.**

See Section 9 for Population Counts and Map Layouts for this Township.

Environmental Concerns:

The level of environmental concern relates to two (3) primary issues:

- Control of a spill & water run off to Prevent Environmental Contamination
- Control of a spill & water run off to Prevent Municipal Infrastructure Contamination
- Involvement of Manitoba Environment for assistance and monitoring air quality

Map 9 New Bothwell

Known Possible Hazard Sites:

- Site 1 Bothwell Cheese
- Site 2 Bothwell School
- Site 3 Colorado Trailer Court
- Site 4 New B's Café & Store

Potential Resource Allocation:

- Police Services Site Security, Traffic Control, Evacuation
- Health Services
 - ✓ Hospital Treatment of injured
 - ✓ Ambulance Site Triage, Transportation
- Fire Services Fire Scene Operation
- Transportation & Operation Services
 - ✓ Senior Facilities and Apartment Facilities
 - ✓ Utility & Operations Personnel
 - ✓ School Division
- Emergency Social Services
 - ✓ Accommodations
 - ✓ Registration & Inquiry
 - ✓ Primary R & I Site

Residential Concerns:

- Colorado Trailer Park
- Apartments
- Residential Area
- Downtown Commercial Core Unknown - time dependant

Facility Concerns:

- Bothwell School – See Evacuation Section of Emergency Plans for Occupancy numbers.
- New Bothwell Community Club - Primary concern is during the evenings and on weekends during the winter season
- Bothwell Cheese Plant – Occupied from 2:00 AM to 5:00 PM. Up to 45 people on site at any one time.

See Section 9 for Population Counts and Map Layout of this Community

Environmental Concerns:

The level of Environmental concern relates to two (3) primary issues:

- Control of a spill and water runoff to Prevent Environmental Contamination
- Control of a spill and water runoff to Prevent Municipal Infrastructure Contamination
- Involvement of Manitoba Environment for assistance and monitoring air quality

Map # 10 – Blumenort**Known Possible Hazard Sites:**

- Site 1 JT's Store & Diner
- Site 2 KK Penner Tire Centers
- Site 3 Penner Farm Services
- Site 4 South East Logging, Pallet & Wood Products
- Site 5 Granny's Poultry CO-OP
- Site 6 Steve's Livestock Transport
- Site 7 Blumenort School

Potential Resource Allocation:

- Police Services Site Security & Evacuation
- Health Services
 - ✓ Hospital Treatment of Injured
 - ✓ Ambulance Site Triage, Transportation, Specialty Evacuation
- Fire Services Fire Scene Operations
- Transportation & Operation Services
 - ✓ Senior Facilities and Apartment Facilities
 - ✓ Utility & Operations Personnel
 - ✓ School Division
 - ✓ Handi Transit
- Emergency Social Services
 - ✓ Accommodations
 - ✓ Registration & Inquiry
 - ✓ Secondary & Mobile R & I

Residential Concerns:

Except for the school, the identified sites are all east of the residential area of Blumenort. There are some residences adjacent

to these facilities that would require immediate evacuation in case of a fire.

Facility Concerns:

- Blumenort School – See Evacuation section of Emergency plan for Occupancy numbers
- Oakwood Place - See Evacuation section of Emergency plan for Occupancy numbers
- Oakview Manor - See Evacuation section of Emergency plan for Occupancy numbers
- Blumenort Christian Preschool, 59 Centre Ave - See Evacuation section of Emergency plan for Occupancy numbers

See Section 9 for Population Counts and Map Layout of this Community**Environmental Concerns:**

The level of environmental concern relates to two (3) primary issues:

- Control of a spill & water run off to Prevent Environmental Contamination
- Control of a spill & water run off to Prevent Municipal Infrastructure Contamination
- Involvement of Manitoba Environment for assistance and monitoring air quality

Map # 11 – Mitchell**Known Possible Hazard Sites:**

- Site 1 Mitchell Arena & Senior Rec. Centre
- Site 2 Mitchell Elementary School
- Site 3 Mitchell Middle School
- Site 4 Mitchell Motors
- Site 5 VD Cabinets

Potential Resource Allocation:

- Police Services Site Security & Evacuation
- Health Services
 - ✓ Hospital Treatment of Injured
 - ✓ Ambulance Site Triage, Transportation, Specialty Evacuation
- Fire Services Fire Scene Operations
- Transportation & Operation Services
 - ✓ Senior Facilities and Apartment Facilities
 - ✓ Utility & Operations Personnel
 - ✓ School Division
 - ✓ Handi Transit
- Emergency Social Services
 - ✓ Accommodations
 - ✓ Registration & Inquiry
 - ✓ Secondary & Mobile R & I

Residential Concerns:

There is considerable residential concentration all around the sites mentioned. All are located in the Northwest part of Mitchell.

The area South of Hwy 52 may not be as severely affected by a fire in one of the sites listed above. There is a substantial amount of rural residential to the south of the LUD of Mitchell that is NOT included in the population count of Mitchell.

Facility Concerns:

- Mitchell Elementary School – See Evacuation section of Emergency plan for Occupancy numbers
- Mitchell Middle School – See Evacuation section of Emergency plan for Occupancy numbers
- Mitchell Arena & Senior Recreation Centre
- Country View School, 32133 Rd.35N – See Evacuation section of Emergency plan for Occupancy numbers

See Section 9 for Population Counts and Map Layout of this Community**Environmental Concerns:**

The level of environmental concern relates to two (3) primary issues:

- Control of a spill & water run off to Prevent Environmental Contamination
- Control of a spill & water run off to Prevent Municipal Infrastructure Contamination
- Involvement of Manitoba Environment for assistance and monitoring air quality

Map # 12 – Kleefeld**Known Possible Hazard Sites:**

- Site 1 Tri Me Cabinets & Millwork Ltd
- Site 2 Kleefeld School
- Site 3 Kleefeld Water Treatment Plant
- Site 4 Twin Creek Woodcraft

Potential Resource Allocation:

- Police Services Site Security & Evacuation
- Health Services
 - ✓ Hospital Treatment of Injured
 - ✓ Ambulance Site Triage, Transportation, Specialty Evacuation
- Fire Services Fire Scene Operations
- Transportation & Operation Services
 - ✓ Senior Facilities and Apartment Facilities
 - ✓ Utility & Operations Personnel
 - ✓ School Division
 - ✓ Handi Transit
- Emergency Social Services
 - ✓ Accommodations
 - ✓ Registration & Inquiry
 - ✓ Secondary & Mobile R & I

Residential Concerns:

There is considerable residential concentration all around most of the sites mentioned. There are also considerable rural residential concentrations to the north-west of Kleefeld. Sites are located along the main street of Kleefeld.

Facility Concerns:

- Kleefeld School – See Evacuation section of Emergency plan for Occupancy numbers
- Village Oaks, 96 Main St South - See Evacuation section of Emergency plan for Occupancy numbers.
- New Hope School, 26104 Rd 33N – See Evacuation section of Emergency plan for Occupancy numbers
- Wild Rose School, 33157 Rd 27E – See Evacuation section of Emergency plan for Occupancy numbers

See Section 9 for Population Counts and Map Layout of this Community**Environmental Concerns:**

The level of environmental concern relates to two (3) primary issues:

- Control of a spill & water run off to Prevent Environmental Contamination
- Control of a spill & water run off to Prevent Municipal Infrastructure Contamination
- Involvement of Manitoba Environment for assistance and monitoring air quality

Map # 13 – Grunthal**Known Possible Hazard Sites:**

- Site 1 South Oaks School
- Site 2 Green Valley School
- Site 3 Menno Home for the Aged
- Site 4 Oaklane Grocery & Gas Bar
- Site 5 Grunthal Water Treatment Plant
- Site 6 Grunthal Welding & Supply
- Site 7 Parmalat Canada Meadowland Dairy Products
- Site 8 Carlton Hatcheries
- Site 9 Master Feeds
- Site 10 Tri Star Dairy Centre Ltd.

Potential Resource Allocation:

- Police Services Site Security & Evacuation
- Health Services
 - ✓ Hospital Treatment of Injured
 - ✓ Ambulance Site Triage, Transportation, Specialty Evacuation
- Fire Services Fire Scene Operations
- Transportation & Operation Services
 - ✓ Senior Facilities and Apartment Facilities
 - ✓ Utility & Operations Personnel
 - ✓ School Division
 - ✓ Handi Transit
- Emergency Social Services
 - ✓ Accommodations
 - ✓ Registration & Inquiry
 - ✓ Secondary & Mobile R & I

Residential Concerns:

There is considerable residential concentration all around the sites mentioned.
The sites are spread throughout the community.

Facility Concerns:

- South Oaks School – See Evacuation section of Emergency plan for Occupancy numbers
- Green Valley School – See Evacuation section of Emergency plan for Occupancy numbers
- Menno Home for the Aged - See Evacuation section of Emergency plan for Occupancy numbers
- Grunthal Christian Preschool - See Evacuation section of Emergency plan for Occupancy numbers
- Good News Daycare - See Evacuation section of Emergency plan for Occupancy numbers
- Mennonite Christian Academy – See Evacuation section of Emergency plan for Occupancy numbers

See Section 9 for Population Counts and Map Layout of this Community**Environmental Concerns:**

The level of environmental concern relates to two (3) primary issues:

- Control of a spill & water run off to Prevent Environmental Contamination
- Control of a spill & water run off to Prevent Municipal Infrastructure Contamination
- Involvement of Manitoba Environment for assistance and monitoring air quality

Rural Municipality
Of
Hanover

ICE STORM/ BLIZZARD

R.M of Hanover is located in the Southeastern Manitoba, with its northern border approximately 21 km. south of Winnipeg. The Municipality covers 205 square miles. The Rural Municipalities of Tache, Richot, De Salaberry, Stuartburn, La Broquerie, Franklin, and Ste. Anne border the Rural Municipality of Hanover.

An Ice Storm / Blizzard Event within the R.M. of Hanover has the potential to come in two forms. First, is a Prairie Blizzard with snowfall and heavy winds making travel at best difficult and at worst making roadway impassable. Although of significance to facilities needing 24-7 staffing there is little or no loss in terms of Provincial or Municipal Infrastructure Services and the overall impact on the Community-at-Large is minimal.

The EOC team would become directly involved in the second potential event being a Major Winter Storm accompanied by heavy snow or ice, significant winds plus the loss of Provincial and/or Municipal Infrastructure Services. The impact of such an event could be significant because most institutional/residential facilities plus most family homes are unprepared to function without Public Utility Service

See Section 9 for Population Counts and Map Layouts

Possible Major Effects:

- Injuries and/or death.
- Disruption of utilities.
- Road closures and stranded travelers.
- Destruction of buildings and property.
- Livestock isolated or killed/crop destruction.
- Isolation of communities and homes.
- Flooding if followed by rapid melting.
- Evacuation of people/livestock.
- Mobility of vehicles and pedestrians restricted by snow, debris downed lines etc.
- Large-scale search and rescue missions to locate stranded or trapped persons/animals.
- Food and water shortages.

Rural Municipality of Hanover Critical Infrastructure:

- Water treatment and distribution plant:
 - Kleefeld water Plant located at 26 College Avenue
 - Grunthal water Plant located at 207 Ash Street.
 - Water reservoirs in both Kleefeld & Grunthal are located at the Water Plant sites noted above.
 - Both Mitchell and New Bothwell residents rely on individual wells.
- Blumenort Sewage lift station located at the corner of Third Avenue & Oakdale Drive
- Grunthal Sewage lift stations are located at the corner of Birch Street & Pine Street with the primary lift station at the corner of Main Street & Cottonwood Road (434 Main Street).
- Kleefeld, New Bothwell and Mitchell have individual septic tanks & low gravity sewer systems.

Facility Concerns:

- Menno Home for the Aged in Grunthal
- Greendale Estate Assisted Living / Supported Housing in Grunthal
- Oakwood Place & Oakview Manor, Blumenort
- Green Valley School, Grunthal
- South Oaks Elementary School, Grunthal
- Grunthal Christian Preschool, PR 216 & 205, Grunthal
- Good News Daycare, PR 216 & 205, Grunthal
- Mennonite Christian Academy, 26077 Rd. 28 N (Grunthal)
- Church of God Sunrise Academy, 24040 Rd. 34E
- Kleefeld School, Kleefeld
- Wild Rose School, 33157 Rd. 27E
- Bothwell School, New Bothwell
- Mitchell Elementary, Mitchell
- Mitchell Middle School, Mitchell
- Country View School, 32133 Rd. 35N
- VF CG Church school, 35062 Rd. 32 E
- Christians of the Gospel Faith School, 32033 Rd. 32E
- Blumenort School, Blumenort
- Blumenort Christian Preschool, 59 Centre Ave, Blumenort

See Evacuation Section of Emergency Plan for occupancy numbers for these facilities.

Protection of Critical infrastructure:

The Municipal Engineer has provided information on the critical infrastructure owned and operated by the RM of Hanover. The following backup systems are in place to ensure the continued service of Sewer and water should a sustained power failure occur.

WATER SERVICES:

In the event of a Municipal wide power failure water to the village of Grunthal will be assured via the waterlines provided power by generator at the water treatment plant. This generator is an automatically operated natural gas system. The generator supplies power to the new well only so additional water supply will require the old well to be equipped with a generator.

If required the RM owns a portable water ‘turtle’ tank that can be installed in the back of a pick-up truck to transport potable water to the community of Kleefeld in the event of a power failure.

Mitchell, New Bothwell and Blumenort residents rely on individual wells for their source of drinking water and would require the delivery of potable water to their community.

SEWER SERVICE

The Sewage lift stations located within the villages of Grunthal and Blumenort both have back up power system in place, which are powered by natural gas. An additional method utilized by Water and Sewer Superintendent to prevent sewer back up is to contract a Septic service and have the reservoirs pumped out to ensure an appropriate level of sewage is maintained. Presently there are several septic services in the area utilized for this task.

Under normal weather conditions power could be discontinued to the lift station for approximately 12 to 24 hours before sewers begin backing up and a generator or pumping would be required. Estimates being as follows:

Grunthal: back up power, unlimited as long as natural gas supply is OK.

Kleefeld: Low-pressure system - would require septic service or individual back up power

New Bothwell: Low-pressure system- would require septic service or individual back up power

Mitchell: Low-pressure system- would require septic service or individual back up power

Blumenort (North of PTH 311): back up power, unlimited as long as natural gas supply is OK

Blumenort (South of PTH311): Low-pressure system- would require septic service or individual back up power

Facilities:

Hanover School Division:

The Schools operated out of the RM of Hanover are under the guidance of the Hanover School division. For details pertaining each school's guidelines and procedures in the event of a Blizzard or major ice storm refer to the Hanover School Division Emergency plan.

None of the schools in the R.M. are equipped with back up power, and would require a transfer switch and connection terminal be installed at schools designated as reception centers. The Hanover School Division is determining the voltage and load requirements of a generator for the following facilities: Mitchell Middle School, Kleefeld Elementary, South Oaks in Grunthal, New Bothwell Elementary, and Blumenort School.

Private Schools:

There are six known private schools within the R.M. of Hanover; Church of God Sunrise Academy located at 25040 Rd.34E; Wild Rose School located at 33157 Rd 33 N; VFCG Church School located at 35062 Rd. 32 E; Christians of the Gospel Faith School located at 32033 Rd. 32E; Country View School located at 32133 Rd. 35 N; and Mennonite Christian Academy located at 26077 Rd. 28 N. Each school should have their own Emergency Plan so the RM's involvement would be one of assistance. See Evacuation section of the Emergency Plan for occupancy numbers.

Grunthal - Menno Home for the Aged:

This is a privately operated personal care home. For details pertaining to the homes guidelines and procedures in the event of a blizzard or major ice storm refer to Menno Home for the Aged's nursing home emergency plan as well as the South East Regional Health Emergency Plan. See Evacuation Section of the Emergency Plan for occupancy numbers.

Facility equipped with automatic water sprinklers, no back-up generator, emergency lighting via battery. The Menno Home has its own Handi-van.

Grunthal - Grunthal Christian Preschool:

This Preschool is operated 5 days each week in the Grunthal Abundant Life Fellowship Church, located on PR 216 & 205 at the east end of Grunthal. See Evacuation Section of the Emergency Plan for occupancy numbers. There is no back-up generator, but the facility is equipped with emergency exit lighting via battery.

Grunthal - Good News Day Care:

This Daycare is operated 5 days each week in the Grunthal Abundant Life Fellowship Church, located on PR 216 & 205 at the east end of Grunthal. See Evacuation Section of the Emergency Plan for occupancy numbers. There is no back-up generator, but the facility is equipped with emergency exit lighting via battery.

Grunthal – Parmalat Canada Meadowland Dairy:

Parmalat operates from 4:30 AM to 10:00PM with up to 30 people each on two shifts. At 1:00 PM shift change there may be up to 40 people on site.

New Bothwell – Bothwell Cheese Inc.:

Bothwell Cheese Inc. operates from 2:00 AM to 5:00PM with up to 45 people on site at any one time.

Blumenort – Oakwood Place & Oakview Manor

Oakwood Place is a privately operated residential home housing 20 individual apartment units (12 suites Oakwood Place - 8 suites under the Blumenort Housing Authority.) Oakview Manor is a second privately operated residential home housing 17 individual apartment units. For details pertaining to the homes guidelines and procedures in the event of a blizzard or major ice storm refer to Oakwood Place's emergency plan.

The mandate for the RM of Hanover would be to provide assistance as required.

Blumenort – Granny's Poultry processing plant:

Granny's Poultry is a major employer in Blumenort and has up to 400 employees working day shift, 400 on evening shift and 60 on night shift in their processing plant. At shift change there are up to 600 employees in the premises. These numbers could require rescue and/or evacuation should a severe winter storm occur.

Blumenort – Blumenort Christian Preschool:

This Preschool is operated 5 days each week in the Blumenort EM Church, located at 59 Centre Ave. at the east end of Blumenort. See Evacuation Section of the Emergency Plan for occupancy numbers. There is no back-up generator, but the facility is equipped with emergency exit lighting via battery.

A listing of the R.M. of Hanover Multi-unit / Apartment Facilities is located in the Evacuation Section of the Emergency Plan.

RESOURCES:

- Portable Water tank
- Power pumps, Gasoline
- Electric Generators
- Batteries
- Amateur radio
- Gasoline, Diesel, Propane
- Portable electric heaters - no
- Blankets
- Septic Trucks
- Heavy Equipment
- Emergency power and lighting
- Evacuation and reception centers
- Construction material- lumber/poly
- Mutual aid from unaffected communities.
- Off road, 4-wheel driver vehicles and snowmobile clubs
- Private Airports and Planes

PRE-EMERGENCY RESPONSE:

SEE ACTION GUIDELINES OF EMERGENCY PLAN FOR SEVERE WEATHER

EMERGENCY RESPONSE:

SEE ACTION GUIDELINES OF EMERGENCY PLAN FOR SEVERE WEATHER

*For details in regards to the Municipalities evacuation and re-entry plan or telephone/resource list see *Evacuation Section of the City of Steinbach / R.M. of Hanover emergency plan.*

POST-EMERGENCY RESPONSE:

SEE ACTION GUIDELINES OF EMERGENCY PLAN FOR SEVERE WEATHER

Rural Municipality
Of
Hanover

Severe Storms/ Tornadoes

The R.M. of Hanover is located in the Southeastern Manitoba, with its northern border approximately 21 km. south of Winnipeg. The Municipality covers 205 square miles. The Rural Municipalities of Tache, Richot, De Salaberry, Stuartburn, La Broquerie, Franklin, and Ste. Anne border the Rural Municipality of Hanover.

A Severe Thunder Storm / Tornado Event within the R.M. of Hanover has the potential to cause loss of life, personal injury, death and injury to livestock and pets, property damage and destruction of crops. The major problem in being prepared for severe storms is they can develop quickly and hit hard.

Weather Watches and Weather Warnings issued by Environment Canada and broadcast over local, regional, and national radio and televisions are currently the only warning method available. **Weather Watch: Conditions are favorable for a severe storm, even though one has not yet developed. Keep monitoring weather conditions and listen for updated statements. Weather Warning: Severe weather is happening or hazardous weather is highly probable. Tornado Warning: means that one or more tornadoes have been observed or are forecast for the specified area. Other warnings types include severe thunderstorm, high winds, and heavy rain.**

The EOC team would become directly involved should flash flooding due to heavy rains, widespread hail damage, tornado or significant winds causing loss of life or personal injury that overwhelms the Municipal Response Teams plus the loss of Provincial and/or Municipal Infrastructure Services. The impact of such an event could be significant because most institutional/residential facilities plus most family homes are unprepared to function without Public Utility Service.

See Section 9 for Population Counts and Map Layouts

Possible Major Effects:

- Injuries and/or death.
- Disruption of utilities.
- Road closures and stranded travelers.
- Destruction of buildings and property.
- Livestock isolated or killed/crop destruction.
- Isolation of communities and homes.
- Flooding.
- Evacuation of people/livestock.
- Mobility of vehicles and pedestrians restricted by debris, downed lines etc.
- Large-scale search and rescue missions to locate stranded or trapped persons/animals.
- Food and water shortages.

Rural Municipality of Hanover Critical Infrastructure:

- Water treatment and distribution plant:
Kleefeld Plant located at 26 College Avenue
Grunthal water Plant located at 207 Ash Street.
Water reservoirs in both Kleefeld & Grunthal are located at the Water Plant sites noted above.
Both Mitchell and New Bothwell residents rely on individual wells.
- Blumenort Sewage lift station located at the corner of Third Avenue & Oakdale Drive
- Grunthal Sewage lift stations are located at the corner of Birch Street & Pine Street with the primary lift station at the corner of Main Street & Cottonwood Road (434 Main Street).
- Kleefeld, New Bothwell and Mitchell have individual septic tanks & low gravity sewer systems.

Facility Concerns:

- Menno Home for the Aged in Grunthal
- Greendale Estate Assisted Living / Supported Housing in Grunthal
- Oakwood Place & Oakview Manor, Blumenort
- Green Valley School, Grunthal
- South Oaks Elementary School, Grunthal
- Grunthal Christian Preschool, PR 216 & 205, Grunthal
- Good News Daycare, PR 216 & 205, Grunthal
- Mennonite Christian Academy, 26077 Rd. 28 N (Grunthal)
- Church of God Sunrise Academy, 24040 Rd. 34E
- Kleefeld School, Kleefeld
- Wild Rose School, 33157 Rd. 27E
- Bothwell School, New Bothwell
- Mitchell Elementary, Mitchell
- Mitchell Middle School, Mitchell
- Country View School, 32133 Rd 35N
- VFCG Church school, 35062 Rd.32 E
- Christians of the Gospel Faith School, 32033 Rd.32E
- Blumenort School, Blumenort
- Blumenort Christian Preschool, 59 Centre Ave, Blumenort

See Evacuation Section of Emergency Plan for occupancy numbers for these facilities.

Protection of Critical infrastructure:

The Municipal Engineer has provided information on the critical infrastructure owned and operated by the RM of Hanover. The following backup systems are in place to ensure the continued service of Sewer and water should a sustained power failure occur.

WATER SERVICES:

In the event of a Municipal wide power failure water to the village of Grunthal will be assured via the waterlines provided power by generator at the water treatment plant. This generator is an automatically operated natural gas system. The generator supplies power to the new well only so additional water supply will require the old well to be equipped with a generator.

If required the RM owns a portable water 'turtle' tank that can be installed in the back of a pick-up truck to transport potable water to the community of Kleefeld in the event of a power failure.

Mitchell, New Bothwell and Blumenort residents rely on individual wells for their source of drinking water and would require the delivery of potable water to their community.

SEWER SERVICE

The Sewage lift stations located within the villages of Grunthal and Blumenort both have back up power system in place, which are powered by natural gas. An additional method utilized by Water and Sewer Superintendent to prevent sewer back up is to contract a Septic service and have the reservoirs pumped out to ensure an appropriate level of sewage is maintained. Presently there are several septic services in the area utilized for this task.

Under normal weather conditions power could be discontinued to the lift station for approximately 12 to 24 hours before sewers begin backing up and a generator or pumping would be required. Estimates being as follows:

Grunthal: back up power, unlimited as long as natural gas supply is OK.

Kleefeld: Low-pressure system - would require septic service or individual back up power

New Bothwell: Low-pressure system- would require septic service or individual back up power

Mitchell: Low-pressure system- would require septic service or individual back up power

Blumenort (North of PTH 311): back up power, unlimited as long as natural gas supply is OK

Blumenort (South of PTH311): Low-pressure system- would require septic service or individual back up power

Facilities:

Hanover School Division:

The Schools operated out of the RM of Hanover are under the guidance of the Hanover School division. For details pertaining each school's guidelines and procedures in the event of a Severe Storm / Tornado refer to the Hanover School Division Emergency plan.

None of the schools in the R.M. are equipped with back up power, and would require a transfer switch and connection terminal be installed at schools designated as reception centers. The Hanover School Division is determining the voltage and load requirements of a generator for the following facilities: Mitchell Middle School, Kleefeld Elementary, South Oaks in Grunthal, New Bothwell Elementary, and Blumenort School.

Private Schools:

There are six known private schools within the R.M. of Hanover;

Church of God Sunrise Academy located at 25040 Rd.34E; Wild Rose School located at 33157 Rd 33 N; VFCG Church School located at 35062 Rd. 32 E; Christians of the Gospel Faith School located at 32033 Rd. 32E; Country View School located at 32133 Rd. 35 N; and Mennonite Christian Academy located at 26077 Rd. 28 N. Each school should have their own Emergency Plan so the RM's involvement would be one of assistance. See Evacuation section of the Emergency Plan for occupancy numbers.

Grunthal - Menno Home for the Aged:

This is a privately operated home housing 40 residents. For details pertaining to the homes guidelines and procedures in the event of a blizzard or major ice storm refer to Menno Home for the Aged's nursing home emergency plan as well as the South East Regional Health Emergency Plan. Facility equipped with automatic water sprinklers, no back-up generator, emergency lighting via battery

Grunthal - Grunthal Christian Preschool:

This Preschool is operated 5 days each week in the Grunthal Abundant Life Fellowship Church, located on PR 216 & 205 at the east end of Grunthal. See Evacuation Section of the Emergency Plan for occupancy numbers. There is no back-up generator, but the facility is equipped with emergency exit lighting via battery.

Grunthal - Good News Day Care:

This Daycare is operated 5 days each week in the Grunthal Abundant Life Fellowship Church, located on PR 216 & 205 at the east end of Grunthal. See Evacuation Section of the Emergency Plan for occupancy numbers. There is no back-up generator, but the facility is equipped with emergency exit lighting via battery.

Grunthal – Parmalat Canada Meadowland Dairy:

Parmalat operates from 4:30 AM to 10:00PM with up to 30 people each on two shifts. At 1:00 PM shift change there may be up to 40 people on site.

New Bothwell – Bothwell Cheese Inc.:

Bothwell Cheese Inc. operates from 2:00 AM to 5:00PM with up to 45 people on site at any one time.

Blumenort – Oakwood Place & Oakview Manor

Oakwood Place is a privately operated residential home housing 20 individual apartment units (12 suites Oakwood Place - 8 suites under the Blumenort Housing Authority.) Oakview Manor is a second privately operated residential home housing 17 individual apartment units. For details pertaining to the homes guidelines and procedures in the event of a blizzard or major ice storm refer to Oakwood Place's emergency plan.

Blumenort – Granny's Poultry processing plant:

Granny's Poultry is a major employer in Blumenort and has up to 400 employees working day shift, 400 on evening shift and 60 on night shift in their processing plant. At shift change there are up to 600 employees in the premises. These numbers could require rescue and/or evacuation should a severe summer storm occur.

Blumenort – Blumenort Christian Preschool:

This Preschool is operated 5 days each week in the Blumenort EM Church, located at 59 Centre Ave. at the east end of Blumenort. See Evacuation Section of the Emergency Plan for occupancy numbers. There is no back-up generator, but the facility is equipped with emergency exit lighting via battery.

A Listing of the R.M. of Hanover Multi-unit / Apartment Facilities can be found in the Evacuation Section of the Emergency Plan.

RESOURCES:

- Portable Water tank
- Power pumps, Gasoline
- Electric Generators
- Batteries
- Amateur radio
- Gasoline, Diesel, Propane
- Portable electric heaters - no
- Blankets
- Septic Trucks
- Heavy Equipment
- Emergency power and lighting
- Evacuation and reception centers
- Construction material- lumber/poly
- Mutual aid from unaffected communities.
- Off road, 4-wheel drive vehicles and other transportation
- Private Airports and Planes

PRE-EMERGENCY RESPONSE:

SEE ACTION GUIDELINES OF EMERGENCY PLAN FOR SEVERE WEATHER

EMERGENCY RESPONSE:

SEE ACTION GUIDELINES OF EMERGENCY PLAN FOR SEVERE WEATHER

*For details in regards to the Municipalities evacuation and re-entry plan or telephone/resource list see *Evacuation Section of the City of Steinbach / R.M. of Hanover emergency plan.*

POST-EMERGENCY RESPONSE:

SEE ACTION GUIDELINES OF EMERGENCY PLAN FOR SEVERE WEATHER

Rural Municipality
Of
Hanover

UTILITY OUTAGE

The R.M of Hanover is located in the Southeastern Manitoba, with its northern border approximately 21 km. south of Winnipeg. The Municipality covers 205 square miles. The Rural Municipalities of Tache, Richot, De Salaberry, Stuartburn, Labroquerie, Franklin, and Ste. Anne border the Rural Municipality of Hanover.

Utility Outages can be a result of:

- Severe Weather conditions: Blizzards, Hail storms, Tornadoes etc
- Secondary incidents, Forest fires, Natural Disasters and Floods
- Man-made disasters, auto accidents, cut wires-pipes.

See Section 9 for Population Counts and Map Layouts

Possible Major Effects:*WATER OUTAGE*

- Health Hazards.
- Economic hazards (industrial).
- Fire fighting abilities hampered.

ELECTRICAL OUTAGE:

- Health and safety hazards (food spoilage in homes, restaurants, and stores)
- Homes, businesses, hospitals and nursing homes without heat
- Difficulty in food preparation
- Water and wastewater pumping and treatment.
- Lack of streetlights.
- Care facilities may not be able to provide treatment/care.
- Economic hazards
- Fire fighting

NATURAL GAS OUTAGE:

- Lack of heat in homes.
- Difficulty in food preparation.
- Explosions of fire from ruptured gas lines.

Rural Municipality of Hanover Critical Infrastructure:

- Water treatment and distribution plant:
 Kleefeld Plant located at 26 College Avenue
 Grunthal water Plant located at 207 Ash Street.
 Water reservoirs in both Kleefeld & Grunthal are located at the Water Plant sites noted above.
 Both Mitchell and New Bothwell residents rely on individual wells.
- Blumenort Sewage lift station located at the corner of Third Avenue & Oakdale Drive
- Grunthal Sewage lift stations are located at the corner of Birch Street & Pine Street with the primary lift station at the corner of Main Street & Cottonwood Road (434 Main Street).
- Kleefeld, New Bothwell and Mitchell have individual septic tanks & low gravity sewer systems.

Facility Concerns:

- Menno Home for the Aged in Grunthal
- Greendale Estate Assisted Living / Supported Housing in Grunthal
- Oakwood Place & Oakview Manor, Blumenort
- Green Valley School, Grunthal
- South Oaks Elementary School, Grunthal
- Grunthal Christian Preschool, PR 216 & 205, Grunthal
- Good News Daycare, PR 216 & 205, Grunthal
- Mennonite Christian Academy, 26077 Rd. 28 N (Grunthal)
- Church of God Sunrise Academy, 24040 Rd. 34E
- Kleefeld School, Kleefeld
- Wild Rose School, 33157 Rd. 27E
- Bothwell School, New Bothwell
- Mitchell Elementary, Mitchell
- Mitchell Middle School, Mitchell
- Country View School, 32133 Rd 35N
- VFCG Church school, 35062 Rd.32 E
- Christians of the Gospel Faith School, 32033 Rd.32E
- Blumenort School, Blumenort
- Blumenort Christian Preschool, 59 Centre Ave, Blumenort

See Evacuation Section of Emergency Plan for occupancy numbers for these facilities.

Protection of Critical infrastructure:

The Municipal Engineer has provided information on the critical infrastructure owned and operated by the RM of Hanover. The following backup systems are in place to ensure the continued service of Sewer and water should a sustained power failure occur.

WATER SERVICES:

In the event of a Municipal wide power failure water to the villages of Grunthal will be assured via the waterlines provided power by generator at the water treatment plant. This generator is an automatically operated natural gas system. The generator supplies power to the new well only so additional water supply will require the old well to be equipped with a generator.

If required the RM owns a portable water ‘turtle’ tank that can be installed in the back of a pick-up truck to transport potable water to the community of Kleefeld in the event of a power failure.

Mitchell, New Bothwell and Blumenort residents rely on individual wells for their source of drinking water and would require the delivery of potable water to their community.

SEWER SERVICE

The Sewage lift stations located within the villages of Grunthal and Blumenort both have back up power system in place, which are powered by natural gas. An additional method utilized by Water and Sewer Superintendent to prevent sewer back up is to contract a Septic service and have the reservoirs pumped out to ensure an appropriate level of sewage is maintained. Presently there are several septic services in the area utilized for this task.

Under normal weather conditions power could be discontinued to the lift station for approximately 12 to 24 hours before sewers begin backing up and a generator or pumping would be required. Estimates being as follows:

Grunthal: back up power, unlimited as long as natural gas supply is OK.

Kleefeld: Low-pressure system - would require septic service or individual back up power

New Bothwell: Low-pressure system- would require septic service or individual back up power

Mitchell: Low-pressure system- would require septic service or individual back up power

Blumenort (North of PTH 311): back up power, unlimited as long as natural gas supply is OK

Blumenort (South of PTH311): Low-pressure system- would require septic service or individual
back up power

Facilities:

Hanover School Division:

The Schools operated out of the RM of Hanover are under the guidance of the Hanover School division. For details pertaining each school's guidelines and procedures in the event of a Blizzard or major ice storm refer to the Hanover School Division Emergency plan.

None of the schools in the R.M. are equipped with back up power, and would require a transfer switch and connection terminal be installed at schools designated as reception centers. The Hanover School Division is determining the voltage and load requirements of a generator for the following facilities: Mitchell Middle School, Kleefeld Elementary, South Oaks in Grunthal, New Bothwell Elementary, and Blumenort School.

Private Schools:

There are six known private schools within the R.M. of Hanover; Church of God Sunrise Academy located at 25040 Rd.34E; Wild Rose School located at 33157 Rd 33 N; VFCG Church School located at 35062 Rd. 32 E; Christians of the Gospel Faith School located at 32033 Rd. 32E; Country View School located at 32133 Rd. 35 N; and Mennonite Christian Academy located at 26077 Rd. 28 N. Each school should have their own Emergency Plan so the RM's involvement would be one of assistance. See Evacuation section of the Emergency Plan for occupancy numbers.

Grunthal - Menno Home for the Aged:

This is a privately operated personal care home. For details pertaining to the homes guidelines and procedures in the event of a blizzard or major ice storm refer to Menno Home for the Aged's nursing home emergency plan as well as the South East Regional Health Emergency Plan. See Evacuation Section of the Emergency Plan for occupancy numbers.

Facility equipped with automatic water sprinklers, no back-up generator, emergency lighting via battery. The Menno Home has its own Handi-van.

Grunthal - Grunthal Christian Preschool:

This Preschool is operated 5 days each week in the Grunthal Abundant Life Fellowship Church, located on PR 216 & 205 at the east end of Grunthal. See Evacuation Section of the Emergency Plan for occupancy numbers. There is no back-up generator, but the facility is equipped with emergency exit lighting via battery.

Grunthal - Good News Day Care:

This Daycare is operated 5 days each week in the Grunthal Abundant Life Fellowship Church, located on PR 216 & 205 at the east end of Grunthal. See Evacuation Section of the Emergency Plan for occupancy numbers. There is no back-up generator, but the facility is equipped with emergency exit lighting via battery.

Grunthal – Parmalat Canada Meadowland Dairy:

Parmalat operates from 4:30 AM to 10:00PM with up to 30 people each on two shifts. At 1:00 PM shift change there may be up to 40 people on site.

New Bothwell – Bothwell Cheese Inc.:

Bothwell Cheese Inc. operates from 2:00 AM to 5:00PM with up to 45 people on site at any one time.

Blumenort – Oakwood Place & Oakview Manor

Oakwood Place is a privately operated residential home housing 20 individual apartment units (12 suites Oakwood Place - 8 suites under the Blumenort Housing Authority.) Oakview Manor is a second privately operated residential home housing 17 individual apartment units. For details pertaining to the homes guidelines and procedures in the event of a blizzard or major ice storm refer to Oakwood Place's emergency plan.

The mandate for the RM of Hanover would be to provide assistance as required.

Blumenort – Granny's Poultry processing plant:

Granny's Poultry is a major employer in Blumenort and has up to 400 employees working day shift, 400 on evening shift and 60 on night shift in their processing plant. At shift change there are up to 600 employees in the premises.

Blumenort – Blumenort Christian Preschool:

This Preschool is operated 5 days each week in the Blumenort EM Church, located at 59 Centre Ave. at the east end of Blumenort. See Evacuation Section of the Emergency Plan for occupancy numbers. There is no back-up generator, but the facility is equipped with emergency exit lighting via battery.

A listing of the R.M. of Hanover Multi-unit / Apartment Facilities is located in the Evacuation Section of the Emergency Plan.

RESOURCES:

- Portable Water tank,
- Power pumps, Gasoline
- Batteries
- Amateur radio
- Gasoline, Diesel, Propane
- Portable electric heaters
- Blankets
- Septic Trucks

PRE-EMERGENCY RESPONSE:

SEE ACTION GUIDELINES OF EMERGENCY PLAN FOR UTILITY OUTAGE

EMERGENCY RESPONSE:

SEE ACTION GUIDELINES OF EMERGENCY PLAN FOR UTILITY OUTAGE

*For details in regards to the Municipalities Evacuation and re-entry plan or Telephone/resource list see City of Steinbach/ R.M. of Hanover emergency plan.

POST-EMERGENCY:

SEE ACTION GUIDELINES OF EMERGENCY PLAN FOR UTILITY OUTAGE

R.M. of Hanover

Emergency Measures Plan

Hazard Analysis

DANGEROUS GOODS ROUTES

**R.M. of Hanover
Hazard Analysis**

DANGEROUS GOODS ROUTES

Nature of Hazard:

There are no designated Dangerous Goods Routes in the R.M. of Hanover. The Designated Truck Routes that are to be followed by major carriers of dangerous goods are: Hwy 12, Hwy 52, Hwy 59, PTH 303, PTH 305, PTH 311, PTH 205, PTH 206, PTH 216, and PTH 403. In addition, transportation of smaller quantities of dangerous goods (gasoline, diesel, anhydrous ammonia, fertilizer, etc.) may occur on any road in the municipality.

Any accident, particularly involving a unit transporting a hazardous product will require the involvement of the Municipal 1st Response Units and Municipal Operations. The possible involvement of the EOC team may rest on the volume of product and the potential danger from infiltration into the Municipal Underground Infrastructure. Airborne contamination could also occur, requiring evacuation of a portion of the municipality.

There is a CP Rail line running the entire length of the west boundary of RM that carries a variety of dangerous goods. The major rail crossing in the RM is at PR 305.

TransCanada has a Natural Gas transmission line that crosses the RM in a North-South direction on the west side of municipal Rd.20 E. There are transfer/distribution stations located where Rd. 20 E intersects with PR 311 and PR 305.

In the event of a Dangerous Goods Incident, follow the Emergency Action Guidelines in the Emergency Plan.

See Section 9 for Population Counts and Map Layouts

Dangerous Goods Locations**Class “B”****Service Stations**

Name	Address	Products	Pin #
Tourond Superette (1) above ground compartmentalized tank	37008 PTH 59	Gasoline (27,500 l.) Diesel (7,500 l.)	UN 1203 UN 1202
New B's Café & Store Above ground tanks	20 Crown Valley Rd. New Bothwell	Gasoline (15,000 l.)	UN 1203
JT'S Store & Diner Above ground fuel Tanks	40 Penner Dr., Blumenort	Gasoline (52,000 l.) Diesel (25,000 l.) Propane (20 lb. tanks)	UN 1203 UN 1202 UN 1075
Dickie's Convenience Corner Buried fuel tanks	24 Centre St, Mitchell	Gasoline Diesel Propane	UN 1203 UN 1202 UN 1075
Brother's Convenience Buried fuel tanks	66 Main St. S, Kleefeld	Gasoline Diesel Propane	UN 1203 UN 1202 UN 1075
CO-OP Gas Bar Buried fuel tanks	383 Main St, Grunthal	Gasoline Diesel Propane	UN 1203 UN 1202 UN 1075
Oaklane Grocery & Gas Station Above ground Fuel Tanks	222 Main St, Grunthal	Gasoline (50,000l.) Diesel (25,000 l) Propane(20 lb tanks)	UN 1203 UN 1202 UN 1075
Sarto General Store Above ground fuel tanks	Sarto (PR 205)	Gasoline (10,000 l) Propane(20 lb tanks)	UN 1203 UN 1075

Business or Distributors

Name	Address	Products	Pin #
Waldemar Lupp	35051 Reichenbach Rd. Mitchell	Mixed paints, thinners Oxygen & acetylene	
Penner Paint & Body Works	9 Centre Ave, Blumenort	Mixed paints, thinners Oxygen & acetylene	
Mitchell Motors & Body Shop	289 Hwy 52, Mitchell	Mixed paints, thinners Oxygen & acetylene	
Yergos Custom Hot Rod Shop	47 Westland Dr.	Mixed paints, thinners Oxygen & acetylene	
Steve's Custom Autobody	92 Main St, Grunthal	Mixed paints, thinners Oxygen & acetylene	
Andreas Villareal	35162 Rd. 41 N,	Mixed paints, thinners Oxygen & acetylene	
GTown Sandlast & Paint	26019 Rd. 29N	Mixed paints, thinners Oxygen & acetylene	

Manufacturers

Name	Address	Products	Pin #

Bulk Stations

Patterson Grain	18036 PR305 (PR305 & CP Rail Line)	Anhydrous Ammonia, Mixed Chemicals & Fertilizers	UN 1005

Other Storage's

--	--	--	--

Rural Municipality of Hanover Critical Infrastructure:

- Water treatment and distribution plant:
Kleefeld Plant located at 26 College Avenue
Grunthal water Plant located at 207 Ash Street.
Water reservoirs in both Kleefeld & Grunthal are located at the Water Plant sites noted above.
Both Mitchell and New Bothwell residents rely on individual wells.
- Blumenort Sewage lift station located at the corner of Third Avenue & Oakdale Drive
- Grunthal Sewage lift stations are located at the corner of Birch Street & Pine Street with the primary lift station at the corner of Main Street & Cottonwood Road (434 Main Street).
- Kleefeld, New Bothwell and Mitchell have individual septic tanks & low gravity sewer systems.

Facility Concerns:

- Menno Home for the Aged in Grunthal
- Greendale Estate Assisted Living / Supported Housing in Grunthal
- Oakwood Place & Oakview Manor, Blumenort
- Green Valley School, Grunthal
- South Oaks Elementary School, Grunthal
- Grunthal Christian Preschool, PR 216 & 205, Grunthal
- Good News Daycare, PR 216 & 205, Grunthal
- Mennonite Christian Academy, 26077 Rd. 28 N (Grunthal)
- Church of God Sunrise Academy, 24040 Rd. 34E
- Kleefeld School, Kleefeld
- Wild Rose School, 33157 Rd. 27E
- Bothwell School, New Bothwell
- Mitchell Elementary, Mitchell
- Mitchell Middle School, Mitchell
- Country View School, 32133 Rd 35N
- VFCG Church school, 35062 Rd.32 E
- Christians of the Gospel Faith School, 32033 Rd. 32E
- Blumenort School, Blumenort
- Blumenort Christian Preschool, 59 Centre Ave, Blumenort

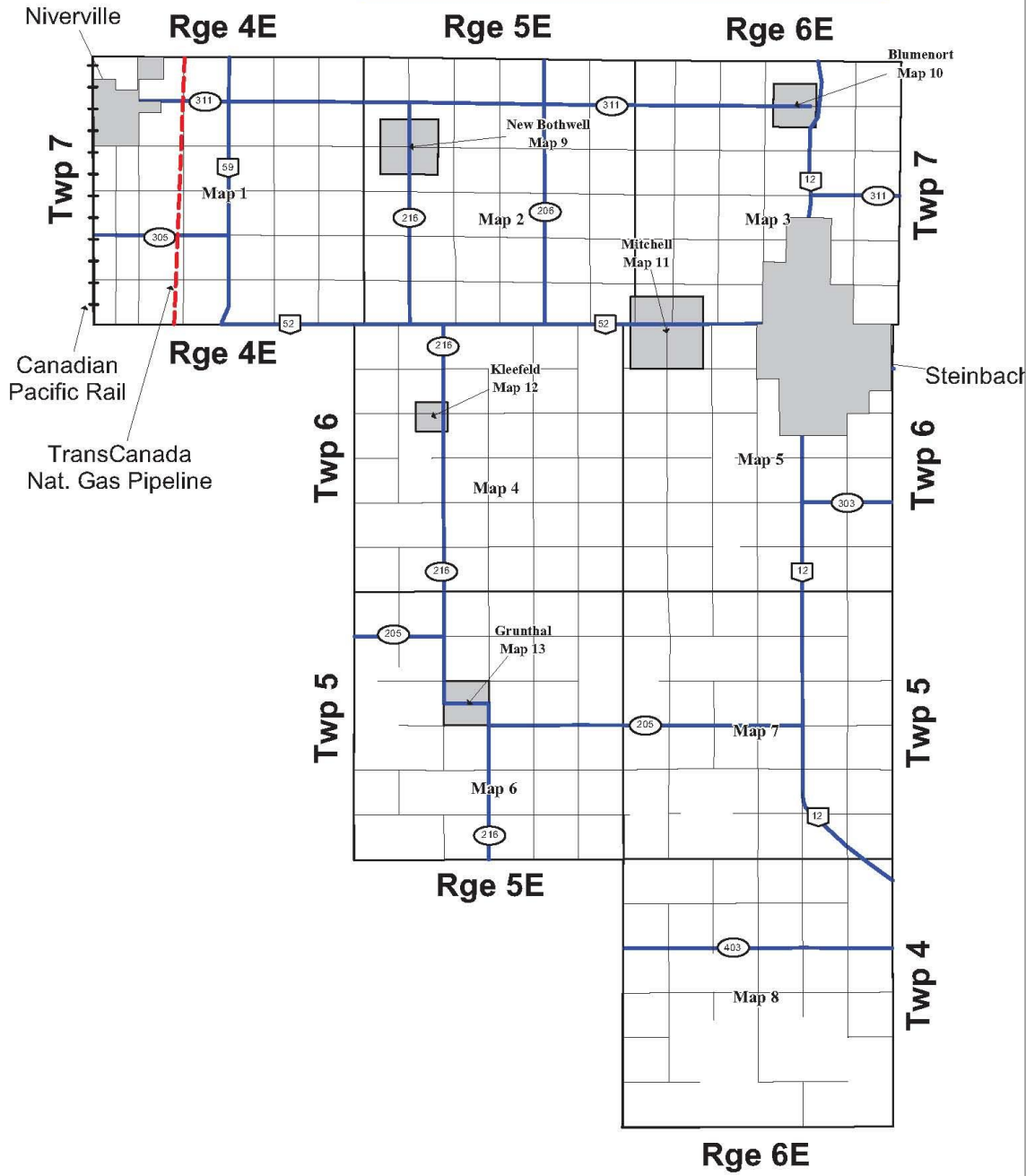
See Evacuation Section of Emergency Plan for occupancy numbers for these facilities.

A listing of Multi-unit / Apartment Facilities within the R.M. of Hanover can be found in the Evacuation Section of the Emergency Plan.

RM of Hanover Dangerous Goods Routes

There are no Designated Dangerous Goods Routes in the R.M. of Hanover, but most Dangerous Goods vehicular traffic would travel on the Provincial Trunk Highways and Provincial Roads. There is, however, the possibility for Dangerous Goods to be found on any road in the municipality.

In addition to that, the CP Rail line traverses entire west boundary of the R.M. and Trans Canada has a high pressure line that crosses the RM from north to south on the west side of Rd. 20 E. There is also a network of natural gas lines throughout the RM that is operated by MB Hydro.



Map 14

July 2017





Rural Municipality of Hanover

SPRING THAW EMERGENCY PLAN

S.T.E.P.

Planning, Surveillance, Monitoring and Mitigation

Spring flooding often happens in a culmination of several events or factors, unless one of these factors are of a singular unprecedented or unusual event of Nature, such as a severe snow and/or ice storm, or heavy rains while spring thaw is taking place.

Events of Nature to watch for are:

- Wet fall weather and ground saturation before freeze up
- Winter snowfall amounts
- Late winter snow and/or ice storms
- Spring thaw rains, or excessive rains which may include a rapid thaw

As laid out in this document, planning is essential in preparedness of meeting the challenge head on. Further planning information is also contained in the municipal Emergency Plan Guideline section. Surveillance and monitoring are components to planning and mitigation, and although there is a list of resources listed below to utilize, the obvious has often been overlooked. Surrounding jurisdictions should be monitored, but local observations are important!

Contacts and Resources:

- Seine/Rat River Conservation District (Consultation)
- Local Environment Canada Volunteer Weather Watchers
- Environment Canada (website accessible)
- Manitoba Conservation – Water Resources (website accessible)
- Manitoba Emergency Measures (email advisories available)

Commencement Date

Mandatory opening of drainage ditches should commence on or around the date of March 15th, depending on projected weather forecasts. Premature opening of drains when heavy snowfalls or high winds are expected only means the work will have to be redone.

Precautionary opening of secondary drains and ditches will commence on the recommendation of the Operations Manager and under the advisement of the Public Works Coordinator, who will work collaboratively with the Emergency Coordinator in monitoring local conditions. Again, caution and discretion are important in opening drains too early, due to the possibility of an unpredicted winter storm.

Mapping

Mapping of proposed drains to be opened and drains to be watched by Public Works staff providing the Planning Staff of the Planning & Enforcement Department with maps to be recorded on the Hanover GIS Mapping system for each year to note which drains are being opened and when.

Public Communications

If or when the potential for public service calls exists after hours, 326-4488 shall have the usual greeting and general public information, but will also include an advisory (during the months of March and April) stating that if the caller has a spring thaw emergency they are to call 346-7129.

On call staff will keep their Supervisor and the Emergency Coordinator apprised of any situation as it escalates, in turn the Emergency Coordinator will brief the CAO, Reeve and/or Control Group.

In the RM of Hanover, for public and media announcements, the Reeve or CAO will make non-emergency announcements, with the Public Information Officer making any State of Emergency announcements.

Staffing

The municipal Emergency Plan has a full list of staff and contact numbers in its Resource section. Aside from full-time staff, seasonal staff may be contacted and advised of a recall. The municipal Emergency Plan has a number of volunteer organizations and contacts if required. The Hanover Fire Department is not responsible for any minor flood fighting efforts such as sand-bagging or resource dispersals. However, this doesn't prevent a volunteer fire fighter from helping his own friends, family, or community if the need arises.

Emergency Operations Centre

Regardless of whether a State of Emergency is declared or not, the EOC can be utilized and partially staffed. Records are to be kept as any event may escalate. For staffing and other resources, consult the municipal Emergency Plan.

Municipal Telecommunications

All Public Works mobile municipal equipment has VHF radios and can utilize the Public Works channel. Several supervisory staff including the Emergency Coordinator has cellular phones and/or pagers, which are listed in the municipal Emergency Plan. The EOC plans to install a permanent VHF base station, along with AM/FM radio, VHF-TV, high speed internet (landline) photocopier and fax. The EOC is also tied into the municipality's central computer server. The Emergency Coordinator and Fire/Rescue Service have Fleet Net radio communications for inter-agency work.

Resources

Note that many of the physical resources listed here can be found in the municipal Emergency Plan along with an extensive list of other equipment, resources, contractors and suppliers.

- Sand and gravel will delivered from one of the private pits or local suppliers as required. Pre-delivery is not advisable as it may freeze before it can be used.
- A current list of municipal equipment is listed in the municipal Emergency Plan.
- Sandbag inventory is kept in the Kleefeld P/W building. Poly is available at Grunthal Lumber in Grunthal, Wm Dyck & Sons in Niverville or EG Penner and McMunn & Yates in Steinbach. Plans for sandbag dike construction are attached to this document.

Procedures for private property flooding

- All calls for resources should be directed to the office where our staff and Municipal Emergency Coordinator can coordinate the requests.
- Empty sandbags will be picked up at the Public Works Shop in Kleefeld where the resident can sign off on them as a promise to pay at a later date, and then a list of sand suppliers will be provided to them to obtain their sand on their own.
- It is also up to the ratepayers to find their sandbagging crew, although we will have a volunteer registration list here at the office that we would maintain, and if the situation would escalate needing more volunteers, a call out for volunteers would be broadcasted through the media.

RM of Hanover Public Works Department Inventory

In advance of each spring thaw staff will do an inventory of required small hand tools and equipment. An attached Check List can be used to update accordingly.

(As menial as it may be, nothing will promote a lack of confidence in a local government more than inadequately equipped staff responding to an emergency).

Small Hand Tool Check List 2017

<p><u>P/W Kleefeld Shop</u></p> <p>Portable Pumps (Honda) 1 – 2 Inch 2 – 3 inch 1 – 4 Inch Honda Power Plant EB2200X Winter Sand Culverts (300mm – 900mm) Sand Bags (12,000) Barricades (90) Road Closed Signs (24) Lathe & Flagging Tape Flashlights (1) Chest Waders (1 pr) Rakes (3) Rubber boots (2 pr) Shovels (6)</p> <p><u>P/W Manager Half-ton Truck</u></p> <p>Flashlights (1) Rake (1) Rubber boots (1 pr) Shovels (1) Barricades & Road Closed Signs (2) Lathe & Flagging Tape</p>	<p><u>P/W Foreman Half-ton Truck</u></p> <p>Flashlight (1) Rake (1) Chestwaders (1) Rubber Boots (1) Shovels (1) Barricades & Road Closed Signs (2) Lathe and Flagging Tape</p> <p><u>Staff Half-ton Truck</u></p> <p>Flashlight (1) Rake (1) Chestwaders (1) Shovels (2) Barricades & Road Closed Signs (2) Lathe and Flagging Tape</p> <p><u>Other Equipment</u></p> <p>Thompson Propane Steamer</p>
---	--

**R. M. of Hanover
Hazard Analysis
Section 7 -
Institutional Facility / Multi Family / Apartment
Evacuation**

The R. M. of Hanover

Hazard Analysis

**Institutional Facility or
Multi Family/Apartment
Evacuation**

Nature of Hazard:

Every risk identified within the Community has the potential to cause a short-term evacuation of an Institutional Facility or a multi-family/apartment facility.

The role of the EOC is to support the 1st Response Units through organizing transportation, as needed, Registration and Enquiry and support. Much of this support will be in the form of assistance to Institutional Evacuation Plans.

See Section 9 for Population Counts and Map Layouts

3. STEP THREE

The site evacuees will be transported to the designated reception location.

4. STEP FOUR

E.S.S. R & I. Team, established by Red Cross (Loins Club), will register all evacuated residents at the Reception Centre.

The R & I Team will establish an enquiry phone for external registration and incoming calls. This number will be made available through E.S.S. for public enquiries.

The housing management from institutional or nurse-in-charge will work through the Reception Centre Manager to meet the needs of the evacuated residents in the short-term stay at the Reception Centre.

5. STEP FIVE

Site Commander will communicate to E.S.S. Director as to re-entry instructions. E.S.S. Director shall co-ordinate the re-entry through the Reception Centre Manager and Transportation for return to the institution or multi-family dwelling.

6. STEP SIX

Post Disaster Debriefing for Volunteers and staff (Set-up Meetings):

- Documentation of financial matters
- Inventory and re-supply
- Thank-you letters to all Volunteers
- Return facilitators to normal operation
- Workshop on Financial Assistance Preparation

E.S.S. Plan (meeting with team members):

- Update plan and note problem area
- Final report to Council

A listing of Institutional Facilities, Multi-Family units, Apartments, etc. is located in the Evacuation section of the Emergency Plan.

Section 8 Municipal Hazard Management Priorities and Financial Commitment

Municipal Hazard Management Priorities and Financial Commitment

Hazard Management Priorities

1. Emergency Services Units Management Priorities

The Operational Priorities established for the R.M of Hanover Emergency Response Units (Police, Fire and Ambulance) during a Hazardous situation, Severe Summer Storm, Major Winter Storm or Ice & Snow Event are:

- 1st** Extraction of citizens from life threatening situations
- 2nd** Maintenance of Departmental day-to-day operational responsibilities for the provision of Fire, Police and Ambulance Services
- 3rd** Evacuation Assistance and Coordination
- 4th** Security of Public and Private Facilities

The critical responsibility of all Emergency Services Personnel is to ensure citizens are comfortable that they will, in a life-threatening situation, have available to them no less than the normal level of Emergency Service. In addition, should individuals be required to leave their homes, they must be assured that their possession will be protected over a period of time that could extend well beyond one (1) day.

Municipal Departmental Management Priorities

The operational priorities established for the R.M. of Hanover Departments are:

- 1st** Protection and maintenance of the Emergency Services Communications Network assuming the loss of the Manitoba Hydro and MTS Communications Grids.
 - Emergency Radio Network out of EOC
 - Public Access (Direct or 911)
 - Emergency Electrical Support in priority order to:
 - a) R.M. of Hanover EOC and EOC Radio Network
 - b) R.M. of Hanover Fire Departments
 - c) Steinbach Fire Department
 - d) Steinbach RCMP Detachment
 - e) St.Pierre RCMP Detachment
 - f) Bethesda Hospital
 - g) DeSalaberry District Health Centre

Note: This represents, initially, the provision of minimal services in order to ensure that Steinbach's Immediate 1st Response Units can maintain their ability to address their first objective; removal of individuals from life threatening situations. Once this initial work is completed, there will be the need to expand these services to permit the EOC to begin to address the long-term issues that will arise within the Community.

Section 8 Municipal Hazard Management Priorities and Financial Commitment

- 2nd** The provision of operational support to Institutions providing Life Assistance Services within the R.M. of Hanover. Of particular concern are the Community Health Care Facilities where moving clients would create a great deal of difficulty for the clients and the personnel.
Note: Initially this represents the provision of minimal services in order to ensure that the institutions can maintain a minimal level of immediate support services to their clients. These services will have to be expanded as quickly as possible, to ensure Institutional Clients and Facilities do not become a continual drain on the Municipal Emergency Response System and on the Communities need for additional resources.
- 3rd** The provision of assistance, help or security, to individuals in a Home Care or Life Monitoring System.
Note: The Critical issue here is knowing locations, primary care provider and as needed moving the individual to a better location.
- 4th** Sustaining the provision of Municipal Utility Services to the total Community.
- 5th** The provision and establishment of Community Reception Centres in order to ensure that if required such Centres can become operational during the Emergency and made available, immediately, to the EOC and the Public.
Note: This represents, initially, the provision of minimal services in order to ensure that Emergency Social Assistance Workers can establish the Reception Centre and begin to receive and provide support to members of the Public. As the timing of the event expands there will be an ever-expanding demand to provide additional resources and effort into the provision of total Reception Centre Services.
- 6th** The development of a Community Information Network under the assumption that all normal communications systems will be disrupted by the loss of Manitoba Hydro and MTS Services.
- 7th** The planning for the evacuation of parts and/or all of the Community, as necessary in order to sustain Basic Life Support Services to citizens in a non-institutional setting.
Note: The level of evacuation will be totally dependent on the ability of the EOC to obtain or provide Utility Services to Institutions and Community Reception Centres. Without Utility Services there may be a need to undertake a total Community Evacuation.
- 8th** The provision of property security within part and/or all of the Community depending on the need for undertaking an evacuation.
- 9th** The development and implementation of a Community re-entry program including:
- Determination of an acceptable level of Utility Service
 - Provision of all Utility Services
 - Critical Stress Debriefing for Emergency Personnel, Institutional Personnel and Citizens

Section 8 Municipal Hazard Management Priorities and Financial Commitment

Financial Commitment for Materials

The cost of addressing a major Winter Snow Event is covered within the annual Snow Clearing and Removal Budget of the Municipality.

The mechanisms for providing assistance during a Hazardous situation, Severe Summer Storm, or Ice & Snow Event within an Emergency Measures Event are:

1. Private Property Costs, in situations where evacuation is not directed by Emergency Measures Personnel under a “State of Local Emergency”, are the responsibility of the Property Owner and addressed through their insurance provider. This includes any damages to Private Property.
2. Private Property Costs, in situations where evacuation is directed by Emergency Measures Personnel under a “State of Local Emergency” are the responsibility of the Property Owner and addressed through their insurance provider. This includes any damages to Private Property. In a case of proven negligence on the part of Emergency Measures Personnel the issue will be addressed through the Insurer of the R.M. of Hanover.
3. In situations where an insurance provider does not cover costs, the rules of the Province of Manitoba Disaster Assistance Fund shall apply and the R.M. of Hanover shall establish the personnel and the process for the making of Disaster Assistance Claims by the Citizens of the municipality.
4. In situations where a “State of Local Emergency” has been declared and individuals are directed to leave their place of residence essential basic requirements - food, shelter and clothing - shall be provided by the R.M. of Hanover under the regulations of the Manitoba Disaster Assistance Fund only under the following conditions:
 - a) The individual(s) has registered at a R.M. of Hanover Registration and Inquiry Centre prior to leaving the Community; and
 - b) The individual(s) can provide a receipt for all items claimed as part of their costs of evacuation.OR
 - c) The individual(s) remain in a Reception Centre setting provided by the R.M. of Hanover Emergency Measures System; and
 - d) All items claimed are approved through a Voucher or Purchase Requisition signed by a member of the Emergency Measures Team with the appropriate spending authority.
5. Institutional Administrators, whether Institutional Care Providers or responsible for facilities used as Reception Centres, may make application to cover their costs to the R.M. of Hanover. After confirmation of how these costs will be addressed by the Provincial Departments, the Municipality will reimburse all costs that are covered through the Manitoba Disaster Assistance Program. All costs must be substantiated as required by the Manitoba Disaster Assistance Program.

(continued)

Section 8 Municipal Hazard Management Priorities and Financial Commitment

6. All private enterprise or Community Association costs shall be paid as per the Purchase Requisition or Voucher approved by a spending authority of the R.M. of Hanover Emergency Measures Organizations.
7. Reimbursement to the R.M. of Hanover for the provision of evacuation assistance to individuals from another Municipal Corporation shall be at the 100% level as per the guidelines of the Province of Manitoba Disaster Assistance Program.

R.M. of Hanover
Hazard Analysis
Section 9
Population Counts and Maps

The R.M. of Hanover Hazard Analysis and Response Plans
Section 9 – Population Counts and Map Layouts

Page:

1. Cover Sheet
2. Index
3. Population Counts for Map Areas 1-2
4. Population Counts for Map Areas 3-4
5. Population Counts for Map Areas 5-6
6. Population Counts for Map Areas 7-8
7. Population Counts for Map Areas 9-13
8. R.M. of Hanover Index Map
9. Map 1: Township 7-4E
10. Map 2: Township 7-5E
11. Map 3: Township 7-6E
12. Map 4: Township 6-5E
13. Map 5: Township 6-6E
14. Map 6: Township 5-5E
15. Map 7: Township 5-6E
16. Map 8: Township 4-6E
17. Map 9: New Bothwell
18. Map 10: Blumenort
19. Map 11: Mitchell
20. Map 12: Kleefeld
21. Map 13: Grunthal

Population Counts and Map Layouts

The R.M. of Hanover Hazard Analysis

- R.M. of Hanover numbers as of September 30, 2018 were estimated to be 5021 for DU & 17901 for population, but growth in the RM in 2019 makes the estimate 5246 for DU & 19,830 for population as of December 31, 2019 based on the mapping information provided.

Population Counts per Map Area

- Township 7-4E (Map 1)** West boundary of RM (CPR Rail line/ Rd 18E), east to Rd. 24E; Rd 42N, south to Rd.36N **excluding** the town of Niverville (all of or portions of sect. 30 & 31).
- Numbers as of September 30, 2018 were estimated to be 151 for DU & 515 for population. No growth in this area for 2019 makes the estimate 153 for DU & 515 for population as of December 31, 2019.
- There are no known Rural Residential developments in this Township.

Dwelling unit and population count estimates for each section of map 1 are listed below.

Sect	DU	Pop	Sect	DU	Pop	Sect	DU	Pop	Sect	DU	Pop	Sect	DU	Pop	Sect	DU	Pop
31	2	5	32	8	27	33	9	41	34	2	7	35	4	10	36	3	15
30	Niverville		29	4	10	28	3	8	27	5	19	26	10	33	25	10	27
19	5	20	20	5	27	21	0	0	22	2	10	23	1	4	24	4	10
18	4	15	17	5	19	16	5	19	15	3	10	14	1	8	13	3	8
7	6	15	8	2	5	9	7	21	10	7	18	11	2	5	12	6	22
6	4	10	5	4	7	4	3	15	3	8	26	2	1	4	1	5	15
Total	153	515	Average = 3.4														

- Township 7-5E (Map 2)** Rd. 24E east to Rd. 30E; Rd. 42N south to PTH 52 **excluding** New Bothwell (part of sect 19, 20, 30 & 29).
- September 2018 numbers were estimated to be 154 for DU & 505 for population. Limited growth in this area for 2019 makes the estimate 155 for DU & 508 for population as of December. 31, 2019.
- There are no known Rural Residential developments in this Township.

Dwelling unit and population count estimates for each section of map 2 are listed below.

Sect	DU	Pop	Sect	DU	Pop	Sect	DU	Pop	Sect	DU	Pop	Sect	DU	Pop	Sect	DU	Pop
31	4	19	32	8	10	33	3	8	34	2	5	35	5	8	36	6	23
30	1	3	29	9	29	28	4	21	27	5	21	26	5	13	25	5	22
19	1	3	20	3	10	21	3	11	22	3	10	23	3	10	24	4	15
18	7	25	17	3	8	16	4	13	15	2	4	14	2	5	13	2	7
7	2	5	8	5	15	9	4	20	10	6	16	11	5	13	12	8	22
6	6	26	5	6	24	4	5	18	3	6	18	2	4	20	1	4	5
Total	155	508	Average = 3.3														

The R.M. of Hanover Hazard Analysis and Response Plans
Section 9 – Population Counts and Map Layouts

- **Township 7-6E (Map 3)** Rd 30E east to Rd 36E; Rd. 42N south to PTH 52 **excluding** Steinbach (portions or all of sect.1, 2, 3, 4, 8, 9, 10, 11, 14, 15. & 17), Blumenort (sect. 27 & part of 28, 34 & 35) and Mitchell (sect. 6 & part of sect. 5).
- September 30, 2018 numbers were estimated to be 167 for DU & 604 for population. Limited growth in this area for 2019 makes the estimate 167 for DU & 604 for population as of December. 31, 2019.
- There are no known Rural Residential developments in this Township.

Dwelling unit and population count estimates for each section of map 3 are listed below.

Sect	DU	Pop	Sect	DU	Pop	Sect	DU	Pop	Sect	DU	Pop	Sect	DU	Pop	Sect	DU	Pop
31	9	47	32	2	7	33	2	8	34	2	6	35	13	56	36	11	39
30	5	15	29	7	25	28	9	35	27	Blumenort		26	22	72	25	5	13
19	3	11	20	9	29	21	7	30	22	8	18	23	2	7	24	2	7
18	4	20	17	2	5	16	2	7	15	1	3	14	4	10	13	8	26
7	3	8	8	4	19	9	8	40	10	Steinbach		11	4	13	12	4	13
6	Mitchell		5	2	7	4	Steinbach		3	Steinbach		2	Steinbach		1	3	8
Total	167	604	Average = 3.6														

- **Township 6-5E (Map 4)** Rd 24E east to Rd. 30 E; PTH 52 south to Rd. 30N **excluding** Kleefeld (in Sections 20, 29, 28 & 21).
- Sept. 30, 2018 numbers were estimated to be 511 dwelling units & 1963 for population. Limited growth in this area for 2019 makes the estimate 526 for DU & 1978 for population as of December. 31, 2019.
- Rural Residential developments are located in Sect 11 (Roseville Dr.), 12 (Rosengard Dr.), 17 (Hochstad Dr), 29 (Lee Dr., Kliewer Dr., Hazelnut Dr., Strawberry Ln., Acorn Dr., Garden Grove, & Cloverfield Dr.), 32 (Oak Lane & Oakpark Dr.) & 35 (Rocky Ln.)

Dwelling unit and population count estimates for each section of map 4 are listed below.

Sect	DU	Pop	Sect	DU	Pop	Sect	DU	Pop	Sect	DU	Pop	Sect	DU	Pop	Sect	DU	Pop
31	6	15	32	57	226	33	7	35	34	1	3	35	33	111	36	14	53
30	7	15	29	76	281	28	7	32	27	8	24	26	7	30	25	12	45
19	8	18	20	9	27	21	11	39	22	12	52	23	3	8	24	12	46
18	3	15	17	24	94	16	14	46	15	25	104	14	10	35	13	9	25
7	5	25	8	6	30	9	6	22	10	19	64	11	44	178	12	19	92
6	2	7	5	6	17	4	12	42	3	9	35	2	13	48	1	10	39
Total	526	1978	Average = 3.8														

The R.M. of Hanover Hazard Analysis and Response Plans
Section 9 – Population Counts and Map Layouts

- **Township 6-6E (Map 5)** Rd 30E east to Rd. 36E; PTH 52 south to Rd 30N **excluding** Mitchell (NE ¼ of 31) and Steinbach (portions of most east 1/4 of sect.33, north half of sect 22 & 23 and all of 25, 26, 27, 34, 35, & 36).
- Sept. 30, 2018 estimated numbers to be 706 dwelling units & 2890 for population. Growth in this area for 2019 makes the estimate 732 for DU & 2935 for population as of December. 31, 2019.
- Rural Residential developments are located in Sect 5 (Pine Hollow), 11 (Friedensfeld south.), 15 (Friedensfeld north), 19 (Morgan Pl., Cranberry Rd., Bluebell Rd., Hazelwood Rd.), 28 (Homestead Cr.), 29 (Budala St, Grace Ln, Paul’s Ln, Sanders Ln, Solomon Ave, Joanna St, Davin St & Mark Ln), 30 (Hanover Pl, Berg Dr., Everoak Pl) 31 (Oakwood Pl, Southern Oak Ln, Jacobs Cv., Giesbrecht Dr., Hildebrandt Dr., Kehler Dr.), 32 (Sterling Dr., Rempel Dr., David’s Bay, Willow Dr. & 33 Westland Dr.)

Dwelling unit and population count estimates for each section of map 5 are listed below.

Sect	DU	Pop	Sect	DU	Pop	Sect	DU	Pop	Sect	DU	Pop	Sect	DU	Pop	Sect	DU	Pop
31	81	290	32	76	299	33	10	34	34	Steinbach	35	Steinbach	36	Steinbach			
30	93	388	29	128	590	28	61	190	27	Steinbach	26	Steinbach	25	Steinbach			
19	62	276	20	4	10	21	11	40	22	13	47	23	11	42	24	11	44
18	7	23	17	8	28	16	8	30	15	16	55	14	14	65	13	4	14
7	8	40	8	9	43	9	16	74	10	7	23	11	15	51	12	3	10
6	11	49	5	19	79	4	4	18	3	4	7	2	9	43	1	9	33
Total	732	2935	Average = 4.1														

- **Township 5-5E (Map 6)** Rd. 24E east to Rd. 30E; Rd. 30N south to Rd.24N **excluding** Grunthal (Sect. 21).
- Sept. 30, 2018 numbers estimated to be 393 dwelling units & 1353 for population. Limited growth in this area for 2019 makes the estimate 1353 for DU & xxx for population as of December. 31, 2019.
- Rural Residential developments are located in Sect 9 (South Ridge Dr.), 29 (Shady Ln), 32 (Green Acres Ln, Lucky Ln, Allary Ln).

Dwelling unit and population count estimates for each section of map 5 are listed below.

Sect	DU	Pop	Sect	DU	Pop	Sect	DU	Pop	Sect	DU	Pop	Sect	DU	Pop	Sect	DU	Pop
31	6	17	32	64	210	33	13	50	34	4	5	35	4	10	36	2	8
30	3	10	29	38	152	28	34	135	27	18	53	26	9	29	25	5	15
19	6	19	20	5	16	21	Grunthal		22	22	70	23	3	15	24	5	18
18	0	0	17	3	9	16	10	35	15	9	33	14	8	33	13	7	24
7	1	3	8	14	41	9	43	137	10	9	35	11	7	28	12	8	27
6	0	0	5	4	10	4	8	28	3	7	20	2	8	38	1	6	20
Total	393	1353	Average = 3.6														

The R.M. of Hanover Hazard Analysis and Response Plans
Section 9 – Population Counts and Map Layouts

Township 5-6E (Map 7) Rd. 30E east to Rd. 36E; Rd. 30N south to Rd. 24N.

- Sept. 30, 2018 numbers were estimated to be 367 dwelling units & 1306 for population. Growth in this area for 2019 makes the estimate 367 for DU & 1306 for population as of December. 31, 2019.
- Rural Residential developments are located in Sect 31 (Deerwood Dr., & 32 (Deerwood Bay). Sarto is located on PR 205 in NE 17-5-6E & SE 20-5-6E.

Dwelling unit and population count estimates for each section of map 7 are listed below

Sect	DU	Pop	Sect	DU	Pop	Sect	DU	Pop	Sect	DU	Pop	Sect	DU	Pop	Sect	DU	Pop
31	33	122	32	47	203	33	6	22	34	18	65	35	19	68	36	4	18
30	9	36	29	5	13	28	3	8	27	11	40	26	14	50	25	10	41
19	9	36	20	17	43	21	6	21	22	7	23	23	8	21	24	8	47
18	5	15	17	10	33	16	5	19	15	14	49	14	6	12	13	8	29
7	5	19	8	6	16	9	15	41	10	13	30	11	3	5	12	5	25
6	3	11	5	2	5	4	4	11	3	8	27	2	9	30	1	12	52
Total	367	1306	Average = 4.0														

Township 4-6E (Map 8) Rd. 30E east to Rd. 36E; Rd. 24N south to Rd. 18N

- Sept. 30, 2018 were estimated to be 90 dwelling units & 310 for population. No growth in this area for 2019 makes the estimate 90 for DU & 310 for population as of December. 31, 2019.
- There are no known Rural Residential developments in this township.

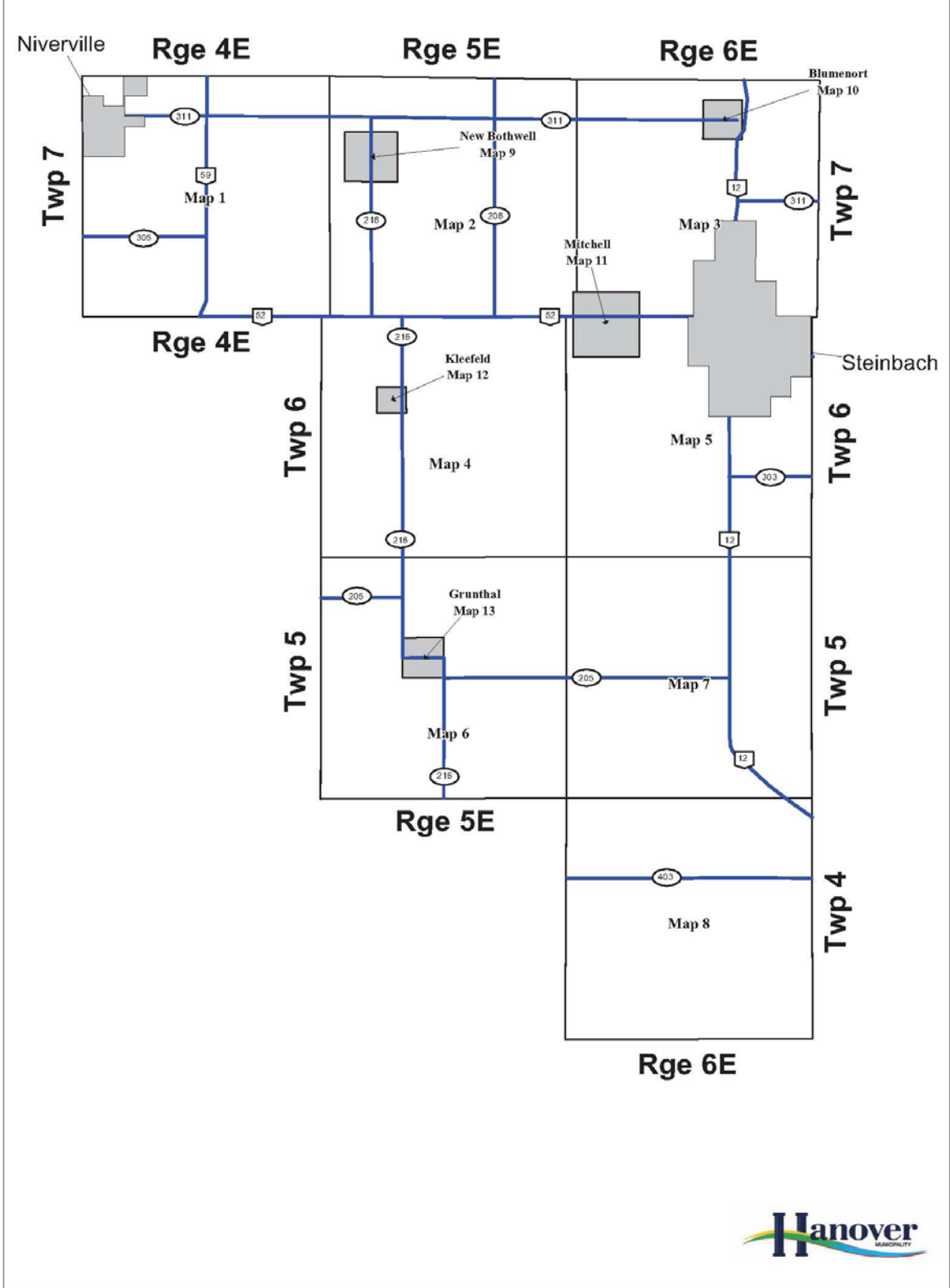
Dwelling unit and population count estimates for each section of map 8 are listed below

Sect	DU	Pop	Sect	DU	Pop	Sect	DU	Pop	Sect	DU	Pop	Sect	DU	Pop	Sect	DU	Pop
31	4	14	32	4	14	33	2	5	34	2	7	35	1	3	36	4	13
30	13	42	29	0	0	28	6	22	27	3	10	26	0	0	25	0	0
19	7	32	20	3	9	21	10	30	22	2	9	23	2	9	24	1	4
18	5	25	17	8	22	16	3	8	15	2	5	14	3	8	13	0	0
7	4	16	8	1	3	9	0	0	10	0	0	11	0	0	12	0	0
6	0	0	5	0	0	4	0	0	3	0	0	2	0	0	1	0	0
Total	90	310	Average = 3.6														

The R.M. of Hanover Hazard Analysis and Response Plans
Section 9 – Population Counts and Map Layouts

- **New Bothwell (MAP 9)**
Numbers as of Sept. 30, 2018 are estimated to be 227 dwelling units & 693 for population based on an average of 3.0 persons / DU. Growth in this area for 2019 makes the estimate 230 for DU & 805 for population as of December 31, 2019.
- **Blumenort (MAP 10)**
Numbers as of Sept. 30, 2018 are estimated to be 547 dwelling units & 1823 for population based on an average of 3.1 persons / DU. Growth in this area for 2019 makes the estimate 585 for DU & 2048 for population as of December 31, 2019.
- **Mitchell (MAP 11)**
Numbers as of Sept. 30, 2018 are estimated to be 783 dwelling units & 2609 for population based on an average of 3.3 persons /DU. Growth in this area for 2019 makes the estimate 840 for DU & 2940 for population as of December 31, 2019.
- **Kleefeld (MAP 12)**
Numbers as of Sept. 30, 2018 are estimated to be 364 dwelling units & 1228 for population based on an average of 3.4 persons /DU. Growth in this area for 2019 makes the estimate 412 for DU & 1442 for population as of December 31, 2019.
- **Grunthal (MAP 13)**
Numbers as of Sept. 30, 2018 are estimated to be 595 dwelling units & 2002 for population based on an average of 3.3 persons /DU. Growth in this area for 2019 makes the estimate 596 for DU & 2086 for population as of December 31, 2019.

RM of Hanover EOC Map Index



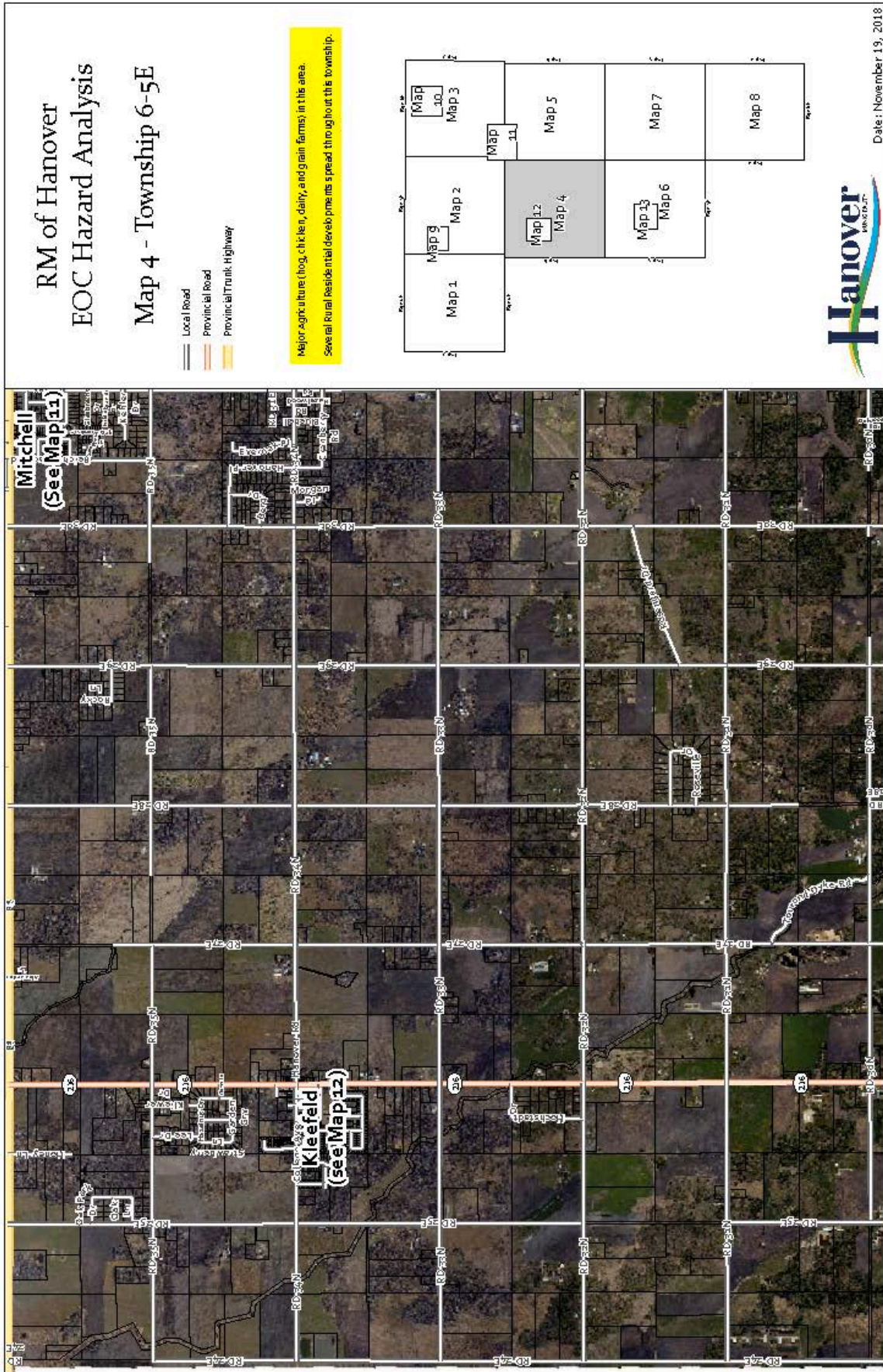
The R.M. of Hanover Hazard Analysis and Response Plans
 Section 9 – Population Counts and Map Layouts



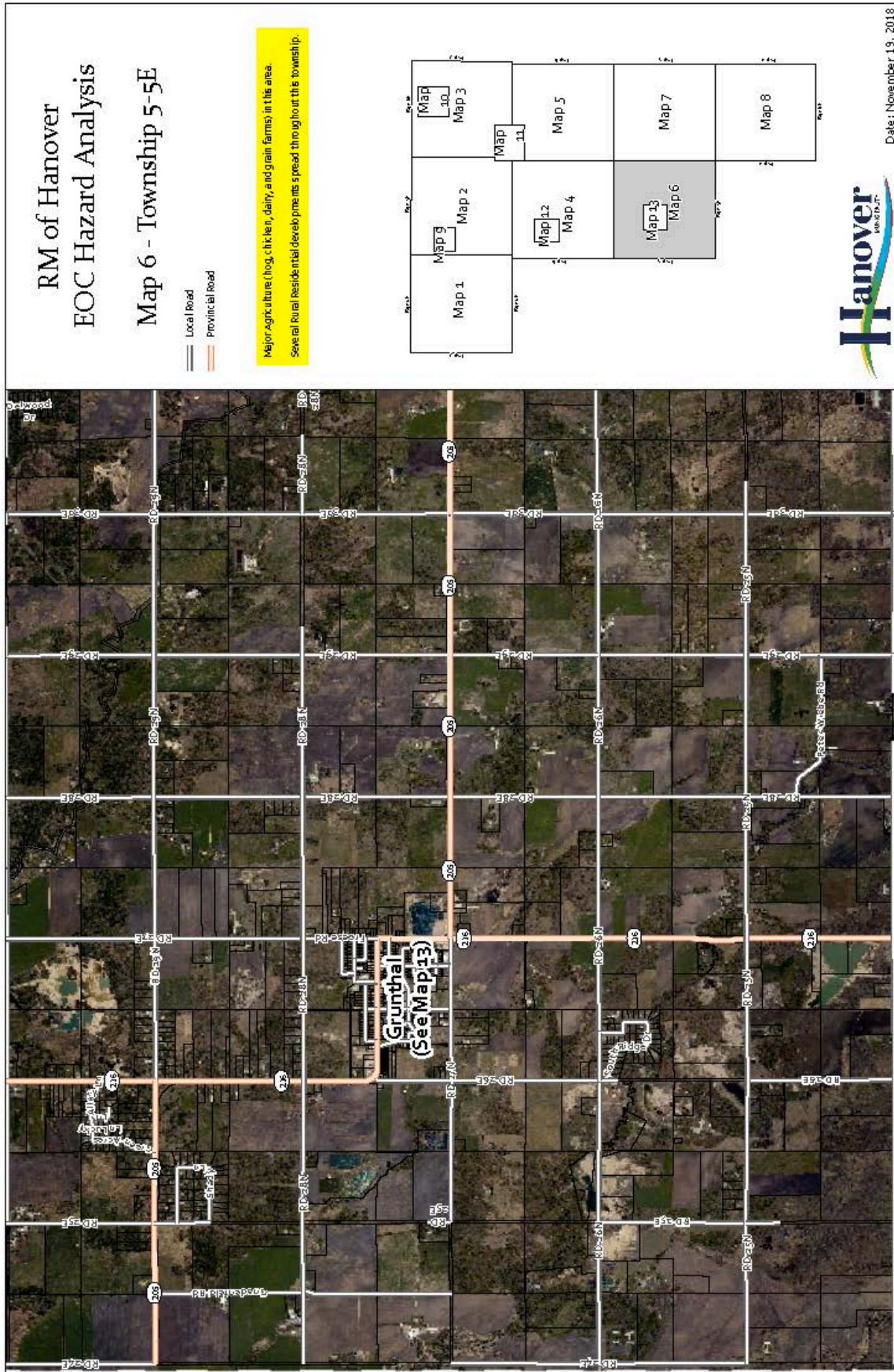
The R.M. of Hanover Hazard Analysis and Response Plans
 Section 9 – Population Counts and Map Layouts



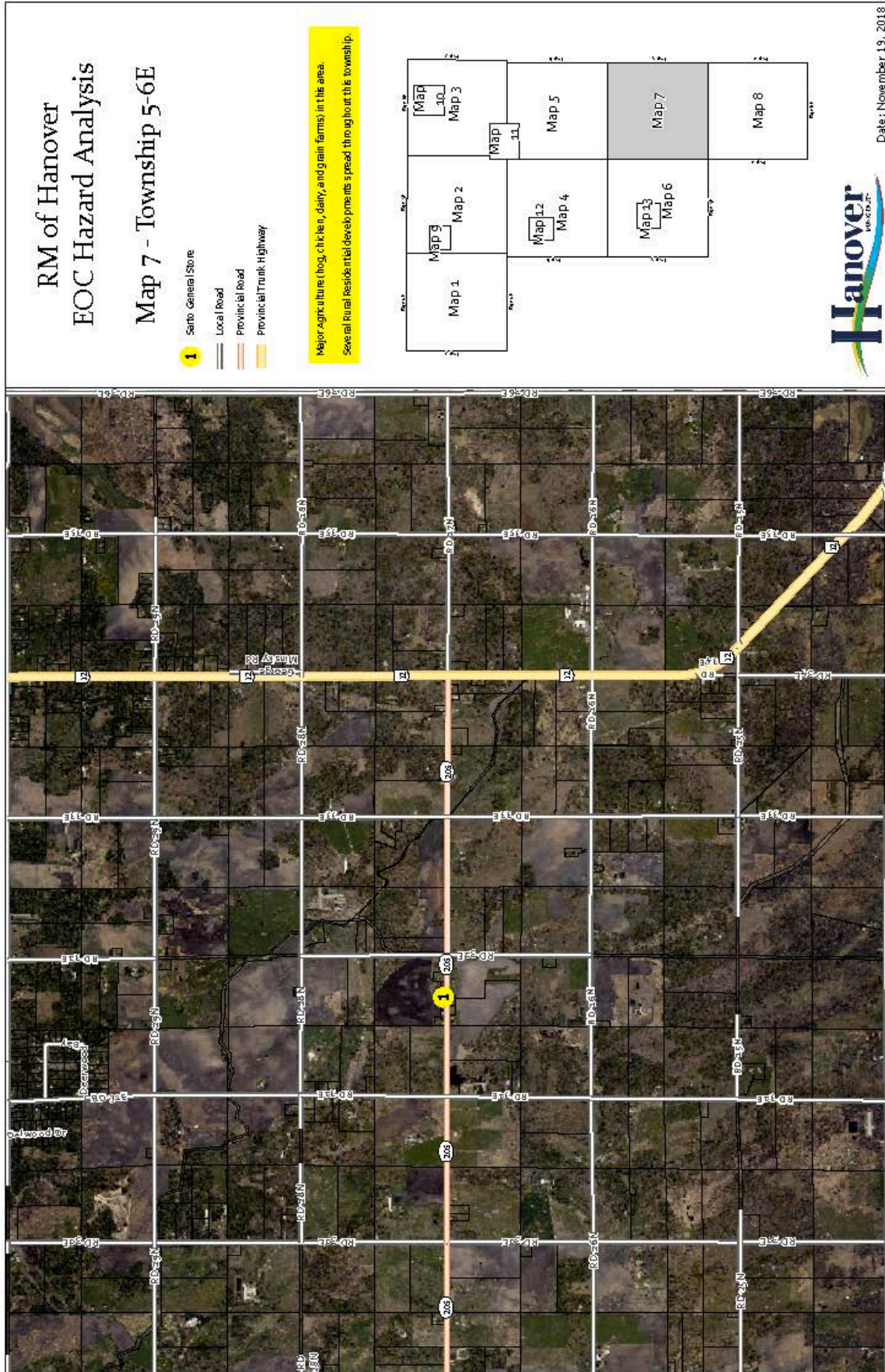
The R.M. of Hanover Hazard Analysis and Response Plans
 Section 9 – Population Counts and Map Layouts



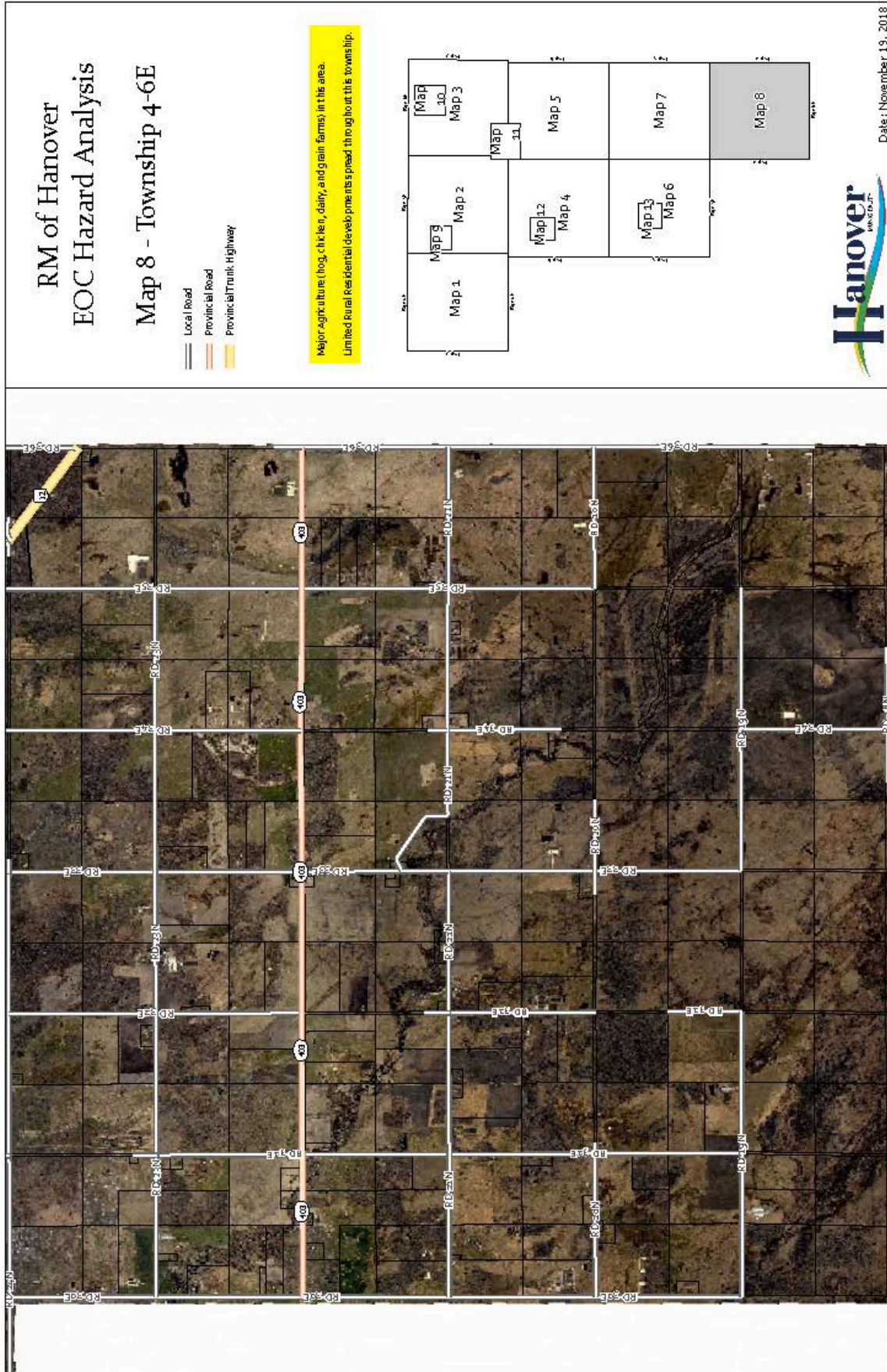
The R.M. of Hanover Hazard Analysis and Response Plans
 Section 9 – Population Counts and Map Layouts



The R.M. of Hanover Hazard Analysis and Response Plans
 Section 9 – Population Counts and Map Layouts



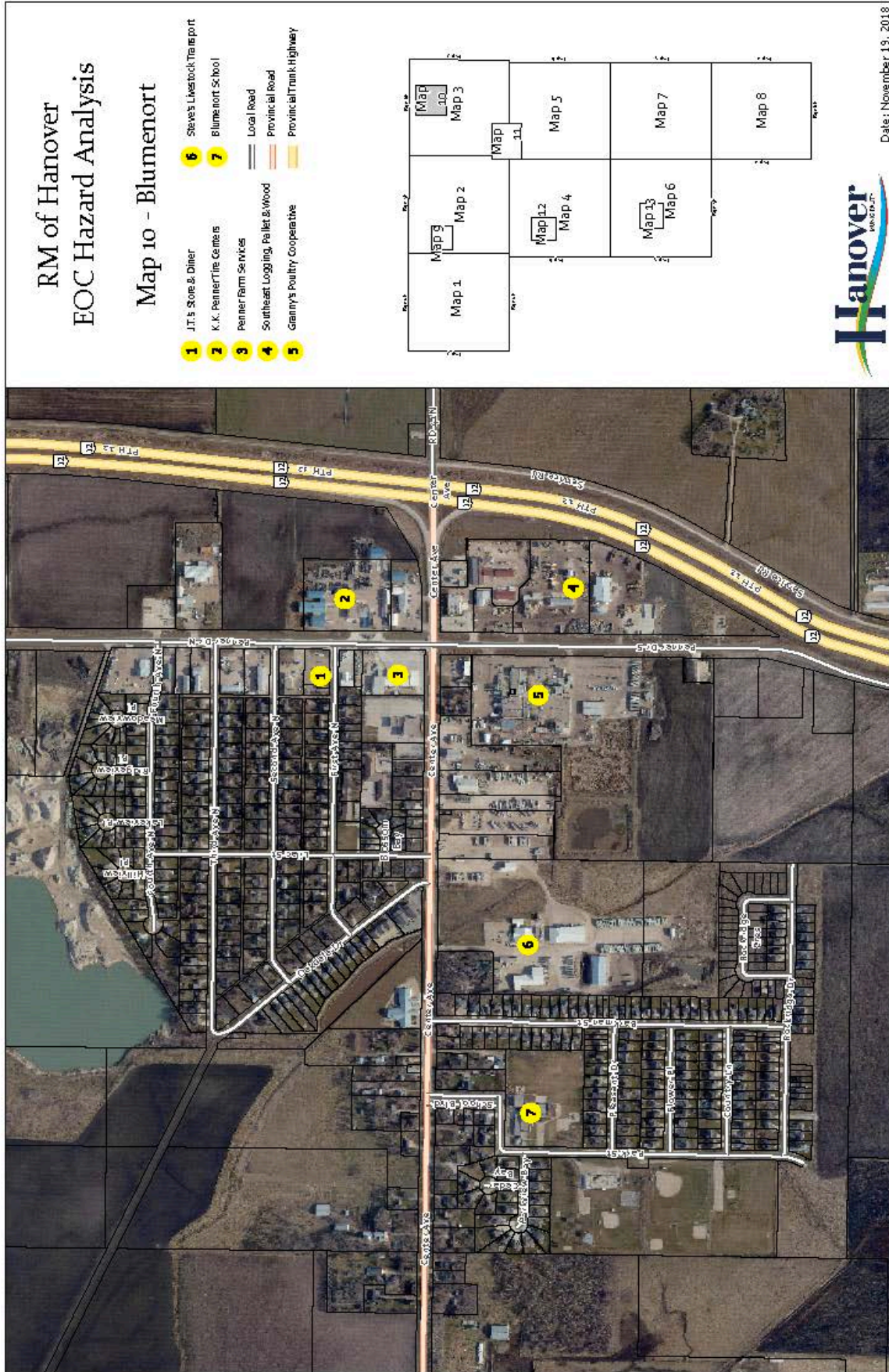
The R.M. of Hanover Hazard Analysis and Response Plans
 Section 9 – Population Counts and Map Layouts



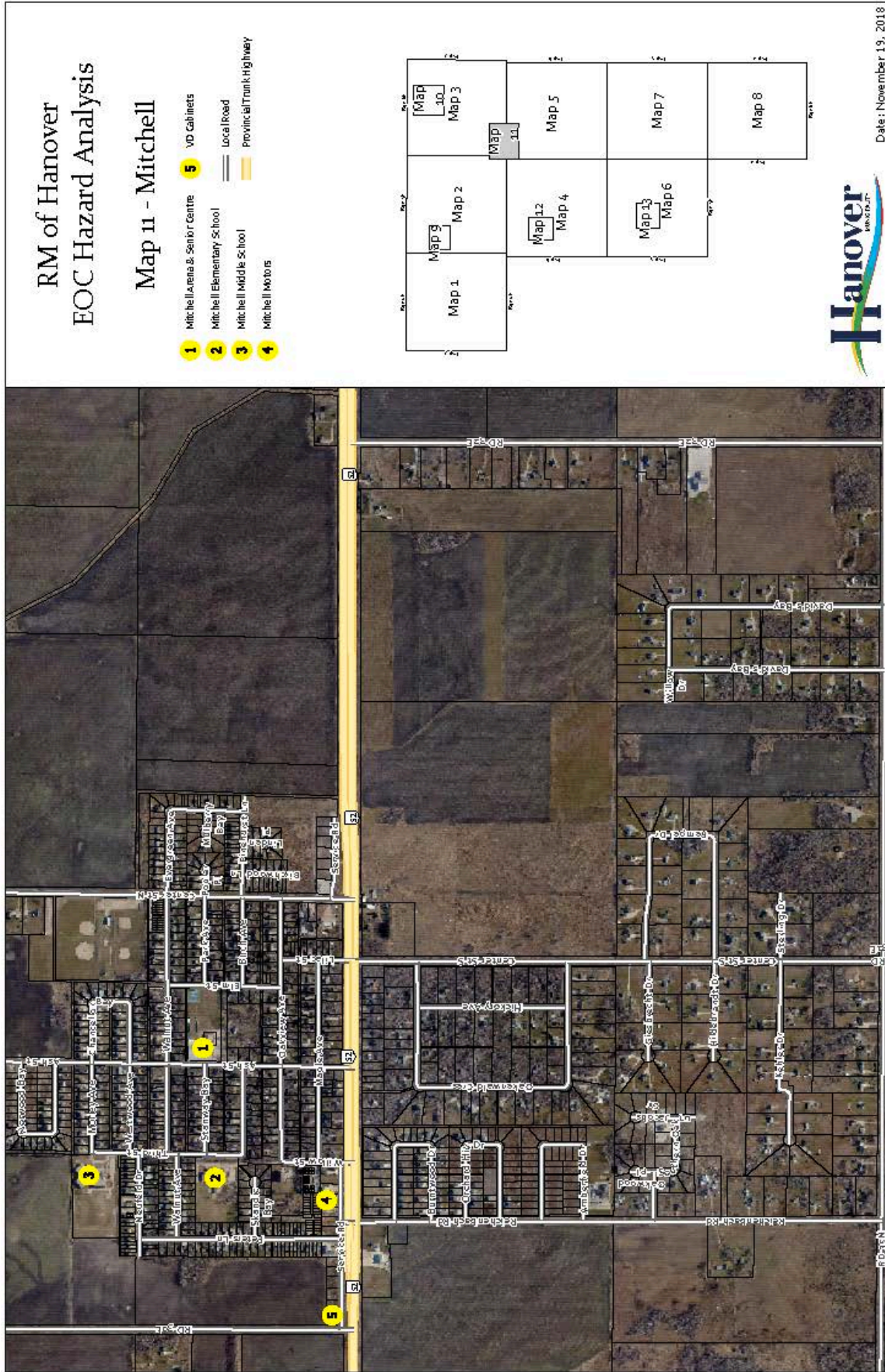
The R.M. of Hanover Hazard Analysis and Response Plans
 Section 9 – Population Counts and Map Layouts



The R.M. of Hanover Hazard Analysis and Response Plans
 Section 9 – Population Counts and Map Layouts



The R.M. of Hanover Hazard Analysis and Response Plans
 Section 9 – Population Counts and Map Layouts



R. M. of Hanover**Hazard Analysis****Section 10-****Airplane Crashes****January 1, 2022**

The RM of Hanover is located southeast of Winnipeg's international airport. Daily flights use the airspace directly above the RM and the likelihood of a major airplane crashing within its borders are low however it remains possible. Small plane crashes are more likely but they would rarely require a large scale response.

In the event of a large passenger aircraft crash the location of the crash would determine whether the event would be a large scale emergency or a small emergency. A crash in a non-populated area will have a much smaller impact on resident and resources than a crash into one of the urban communities. The latter could result in a mass casualty situation on the ground as well as the people on the airplane. Fires and explosions are also a major concern as it could affect a large number of people.

See Section 9 for Population Counts and Map Layouts

Possible Major Effects:

- Loss of life of the aircraft passengers
- Loss of life on the ground
- Multiple injuries
- Damage to homes and businesses
- Damage and loss of Major Infrastructure
- Overwhelming hospitals and emergency services
- Power outages
- Evacuation of residents in homes, schools, daycares and seniors in care homes

Rural Municipality of Hanover Critical Infrastructure:

- Water treatment and distribution plant:
 - Kleefeld Plant located at 26 College Avenue
 - Grunthal water Plant located at 207 Ash Street.
 - Water reservoirs in both Kleefeld & Grunthal are located at the Water Plant sites noted above.
 - Both Mitchell and New Bothwell residents rely on individual wells.
- Blumenort Sewage lift station located at the corner of Third Avenue & Oakdale Drive
- Grunthal Sewage lift stations are located at the corner of Birch Street & Pine Street with the primary lift station at the corner of Main Street & Cottonwood Road (434 Main Street).
- Kleefeld, New Bothwell and Mitchell have individual septic tanks & low gravity sewer systems.

Facility Concerns:

- Menno Home for the Aged in Grunthal
- Greendale Estate Assisted Living / Supported Housing in Grunthal
- Oakwood Place & Oakview Manor, Blumenort
- Green Valley School, Grunthal
- South Oaks Elementary School, Grunthal
- Grunthal Christian Preschool, PR 216 & 205, Grunthal
- Good News Daycare, PR 216 & 205, Grunthal
- Mennonite Christian Academy, 26077 Rd. 28 N (Grunthal)
- Church of God Sunrise Academy, 24040 Rd. 34E
- Kleefeld School, Kleefeld
- Wild Rose School, 33157 Rd. 27E
- Bothwell School, New Bothwell
- Mitchell Elementary, Mitchell
- Mitchell Middle School, Mitchell

- Country View School, 32133 Rd 35N
- VFCG Church school, 35062 Rd.32 E
- Christians of the Gospel Faith School, 32033 Rd.32E
- Blumenort School, Blumenort
- Blumenort Christian Preschool, 59 Centre Ave, Blumenort

See Evacuation Section of Emergency Plan for occupancy numbers for these facilities.

Protection of Critical infrastructure:

The Municipal Engineer has provided information on the critical infrastructure owned and operated by the RM of Hanover. The following backup systems are in place to ensure the continued service of Sewer and water should a sustained power failure occur.

WATER SERVICES:

In the event of a Municipal wide power failure water to the villages of Grunthal will be assured via the waterlines provided power by generator at the water treatment plant. This generator is an automatically operated natural gas system. The generator supplies power to the new well only so additional water supply will require the old well to be equipped with a generator.

If required the RM owns a portable water 'turtle' tank that can be installed in the back of a pick-up truck to transport potable water to the community of Kleefeld in the event of a power failure.

Mitchell, New Bothwell and Blumenort residents rely on individual wells for their source of drinking water and would require the delivery of potable water to their community.

SEWER SERVICE

The Sewage lift stations located within the villages of Grunthal and Blumenort both have back up power system in place, which are powered by natural gas. An additional method utilized by Water and Sewer Superintendent to prevent sewer back up is to contract a Septic service and have the reservoirs pumped out to ensure an appropriate level of sewage is maintained. Presently there are several septic services in the area utilized for this task.

Under normal weather conditions power could be discontinued to the lift station for approximately 12 to 24 hours before sewers begin backing up and a generator or pumping would be required. Estimates being as follows:

Grunthal: back up power, unlimited as long as natural gas supply is OK.

Kleefeld: Low-pressure system - would require septic service or individual back up power

New Bothwell: Low-pressure system- would require septic service or individual back up power

Mitchell: Low-pressure system- would require septic service or individual back up power

Blumenort (North of PTH 311): back up power, unlimited as long as natural gas supply is OK

Blumenort (South of PTH311): Low-pressure system- would require septic service or individual back up power

Facilities:

Hanover School Division:

The Schools operated out of the RM of Hanover are under the guidance of the Hanover School division. For details pertaining each school's guidelines and procedures in the event of a Blizzard or major ice storm refer to the Hanover School Division Emergency plan.

None of the schools in the R.M. are equipped with backup power, and would require a transfer switch and connection terminal be installed at schools designated as reception centers. The Hanover School Division is determining the voltage and load requirements of a generator for the following facilities: Mitchell Middle School, Kleefeld Elementary, and South Oaks in Grunthal, New Bothwell Elementary, and Blumenort School.

Private Schools:

There are six known private schools within the R.M. of Hanover; Church of God Sunrise Academy located at 25040 Rd.34E; Wild Rose School located at 33157 Rd 33 N; VFCG Church School located at 35062 Rd. 32 E; Christians of the Gospel Faith School located at 32033 Rd. 32E; Country View School located at 32133 Rd. 35 N; and Mennonite Christian Academy located at 26077 Rd. 28 N. Each school should have their own Emergency Plan so the RM's involvement would be one of assistance. See Evacuation section of the Emergency Plan for occupancy numbers.

Grunthal - Menno Home for the Aged:

This is a privately operated personal care home. For details pertaining to the homes guidelines and procedures in the event of a blizzard or major ice storm refer to Menno Home for the Aged's nursing home emergency plan as well as the South East Regional Health Emergency Plan. See Evacuation Section of the Emergency Plan for occupancy numbers.

Facility equipped with automatic water sprinklers, no back-up generator, emergency lighting via battery. The Menno Home has its own Handi-van.

Grunthal - Grunthal Christian Preschool:

This Preschool is operated 5 days each week in the Grunthal Abundant Life Fellowship Church, located on PR 216 & 205 at the east end of Grunthal. See Evacuation Section of the Emergency Plan for occupancy numbers. There is no back-up generator, but the facility is equipped with emergency exit lighting via battery.

Grunthal - Good News Day Care:

This Daycare is operated 5 days each week in the Grunthal Abundant Life Fellowship Church, located on PR 216 & 205 at the east end of Grunthal. See Evacuation Section of the Emergency Plan for occupancy numbers. There is no back-up generator, but the facility is equipped with emergency exit lighting via battery.

Grunthal – Parmalat Canada Meadowland Dairy:

Parmalat operates from 4:30 AM to 10:00PM with up to 30 people each on two shifts. At 1:00 PM shift change there may be up to 40 people on site.

New Bothwell – Bothwell Cheese Inc.:

Bothwell Cheese Inc. operates from 2:00 AM to 5:00PM with up to 45 people on site at any one time.

Blumenort – Oakwood Place & Oakview Manor

Oakwood Place is a privately operated residential home housing 20 individual apartment units (12 suites Oakwood Place - 8 suites under the Blumenort Housing Authority.) Oakview Manor is a second privately operated residential home housing 17 individual apartment units. For details pertaining to the homes guidelines and procedures in the event of a blizzard or major ice storm refer to Oakwood Place's emergency plan. The mandate for the RM of Hanover would be to provide assistance as required.

Blumenort – Granny's Poultry processing plant:

Granny's Poultry is a major employer in Blumenort and has up to 400 employee's working day shift, 400 on evening shift and 60 on night shift in their processing plant. At shift change there are up to 600 employees in the premises.

Blumenort – Blumenort Christian Preschool:

This Preschool is operated 5 days each week in the Blumenort EM Church, located at 59 Centre Ave. at the east end of Blumenort. See Evacuation Section of the Emergency Plan for occupancy numbers. There is no back-up generator, but the facility is equipped with emergency exit lighting via battery.

A listing of the R.M. of Hanover Multi-unit / Apartment Facilities is located in the Evacuation Section of the Emergency Plan.

Resources:

- Portable Water tank
- Power pumps, Gasoline
- Electric Generators
- Batteries
- Amateur radio
- Gasoline, Diesel, Propane
- Portable electric heaters - no
- Blankets
- Septic Trucks
- Heavy Equipment
- Emergency power and lighting
- Evacuation and reception centers
- Construction material- lumber/poly
- Mutual aid from unaffected communities.
- Off road, 4-wheel drive vehicles and other transportation
- Private Airports and Planes

